

SEMIX MOBILE 60 S4

MOBILE CONCRETE BATCHING PLANTS



SMX-F-2311021405-1

PROPOSAL

DM BAYSAL

Demet Baysal

sales@semixglobal.com

+905418098211

Turkey

Delivery

8-12 weeks

Validity Of Offer

17-11-2023

Terms Of Payment

%50 Advance, %50 Before Shipment



MOBILE 60 S4

DESCRIPTION	AMOUNT	UNIT PRICE	TOTAL PRICE
1) MOBILE 60 S4	1	€145,000.00	€145,000.00
1.1) 60S4 MOBILE CONCRETE BATCHING PLANT'S TOTAL CAPACITY : 60 M ³ /H	1	-	-
1.2) MIXER TYPE & CAPACITY: 1500/1000 (1.0 M ³) SEMIX SINGLE SHAFT MIXER	1	-	-
1.3) MIXER MOTOR POWER: 37 KW	1	-	-
1.4) CEMENT WEIGHING HOPPER: 600 KG	1	-	-
1.5) WATER WEIGHING HOPPER: 300 KG	1	-	-
1.6) ADDITIVE WEIGHING HOPPER: 20 LITRES	1	-	-
1.7) ADDITIVE PUMPS: 1	1	-	-
1.8) AGGREGATE BIN CAPACITY: 4 X 10 = 40 M ³ INLINE BINS	1	-	-
1.9) AGGREGATE WEIGHING SYSTEM: WEIGHING CONVEYOR BELT	1	-	-
1.10) AGGREGATE TRANSFER MECHANISM: CONVEYOR BELT	1	-	-
1.11) COMPRESSOR: 700 LT/MIN	1	-	-
1.12) ELECTRICAL PANEL COMPONENTS: SCHNEIDER (INCLUDING PLC)	1	-	-
1.13) SOFTWARE: SEMIX (SQL BASED)	1	-	-
1.14) CONTROL CABINE: PRESENT	1	-	-
		Subtotal:	€145,000.00
		Discount:	-€15,000.00
		Total:	€130,000.00
TRANSPORTATION			
		Mobile 60 S4 - (CPT Adana)	€3,500.00
		General Total:	€133,500.00

36 M³ HORIZONTAL CEMENT SILO

DESCRIPTION	AMOUNT	UNIT PRICE	TOTAL PRICE
2) 36 M ³ HORIZONTAL CEMENT SILO	1	€55,000.00	€55,000.00
2.1) STORAGE CAPACITY: -	1	-	-
2.2) FILTER: -	1	-	-
2.3) CEMENT SCREW CONVEYOR: -	1	-	-
2.4) AIR JETS: -	1	-	-
2.5) VIBRATORS: -	1	-	-
2.6) MECHANICAL LEGS: -	1	-	-
2.7) SOFTWARE: -	1	-	-
		Subtotal:	€55,000.00
		Total:	€55,000.00
TRANSPORTATION			
		36 m ³ Horizontal Cement Silo - (CPT Adana)	€1,000.00
		General Total:	€56,000.00

OPTION 1

DESCRIPTION	AMOUNT	UNIT PRICE	TOTAL PRICE
1) GENERATOR 250 KVA	1	€50,000.00	€50,000.00
		Subtotal:	€50,000.00
		Total:	€50,000.00
TRANSPORTATION			
		Generator - (CPT Adana)	€1,000.00
		General Total:	€51,000.00



SEMIX Mobile 60 S4 is equipped with 1500/1000 liters capacity Concrete mixers which can be a single shaft, twin shaft, or planetary type mixers. In SEMIX Concrete Mixers NiHard4 or Hardox 450 wearings are used according to the Concrete recipe's sillicium ratio.

Aggregate storage hoppers can be fed by wheeled loaders with a single ramp. Aggregates are weighed in the weighing conveyor which transfers aggregates to the transfer conveyor. Having two separate conveyors providing accuracy in weighing and performance for reaching higher Concrete outputs.

All SEMIX Concrete Batching Plants are being controlled by a SCADA system with a Schneider PLC integrated. Users can follow all used materials and integrate it their CRM system. SEMIX's engineering team can intervene in the Automation system online to provide service.



Patented Aggregate Bin Design

In SEMIX Mobile 60S4 batching plants, only one ramp needed for feeding aggregate bins thanks to its' patented design. Inline aggregate bin structure eliminates the need of installing a pre-feeding conveyor

High Mobility

Semix Mobile 60S4 can be rapidly assembled in 2 days with its' compact design. It can be relocated to another project easily because of its' high mobility.



Customized Options

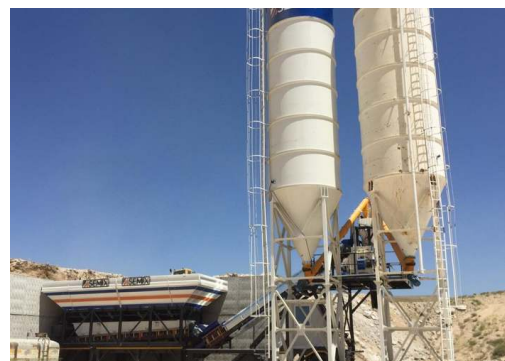
SEMIX is able to design special projects for your requirements with a strong engineering team.

SEMIX Concrete Mixers

In SEMIX **Mobile 60** Concrete Batching Plants, 1 m³ of compacted concrete output capacity **mixers** are preferred. Depending on requirements, **single shaft**, **twin shaft** or **planetary mixers** can be adapted to the Mobile 60S4 batching plant. The mixing process is controlled electronically by a mixer-control unit software, which performs as a full automatic unit.



Product Gallery



Our worldwide solutions

1.25 m³ Single Shaft Concrete Mixer

Brand & Model : Semix SM 1875 / 1250 lt – Horizontal **Single Shaft Mixer**

Loading Capacity : 1875 lt

Compacted Concrete Capacity : 1250 lt

Electric Motor : 37 kW GAMA/VOLT-1 Unit, with thermic overload switch protection



Mixing Blades & Wearing Plates

Mixing Blade : Ni-Hard 4 (**Chrome, Nickel special alloy cast iron**)

Stripping Blade : Ni-Hard 4 (**Chrome, Nickel special alloy cast iron**)

Internal Wearing : **HARDOX 450**

Ni-Hard 4 : In all **SEMIX Concrete Mixers**, Ni-Hard 4 alloys are being used in mixer blades. NiHard 4 is a high-strength cast iron alloy that contains 4% nickel and has a tensile strength of up to 1,200 MPa. The nickel in NiHard 4 creates a tough surface that resists abrasion, while the hardening agents make the alloy harder and more resistant to deformation. This structure is ideal for products under conditions of high abrasiveness and high impact conditions. It is commonly used in applications that require high strength. NiHard 4 has a very low coefficient of thermal expansion, which makes it ideal for use in high-temperature applications. NiHard 4 is a type of steel that is very strong and resistant to wear and tear. It is commonly used in industrial applications where durability is key.



Lubrication : 4 Points Automatic Lubrication System **SKF - LINCOLN (German)**

Automatic lubrication system is integrated with the PLC and SCADA, the system periodically lubricates the necessary points and preventing from major problems. These systems use sensors to detect the level of lubricant present and dispense the appropriate amount automatically.



Discharge Door : 1 Unit / **Hydraulic**

Discharging in Emergency Situations : Present - Manual Pump

Water Dispenser : Present - 1 Unit

Emergency Stop Button : Present - 1 Unit

Maintenance Door Safety Switch : Present - 1 Unit

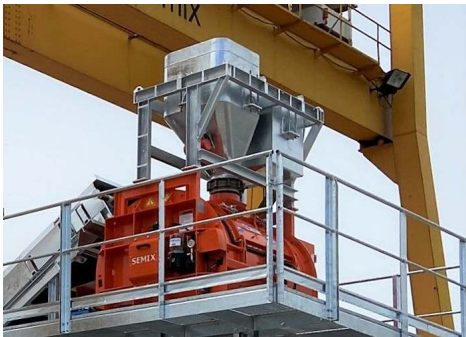
Main Mixing Chassis

General view : The main chassis was built in compliance with international requirements with a transition height of 4,100 mm to 4,250 mm with high-quality steel components and outstanding workmanship. For maneuvering and filling the truck mixer with an average width of 5,000 mm, the main chassis offers great ease. A platform, handrails, and stairs are built into the main chassis.

Supports of the chassis : UNP & INP profiles with extra cross braces.

Concrete discharge funnel : 1 Unit for quick cleaning with inlaid, galvanized bar construction. Highly wear-resistant coating.

Walkways, stairs & railings : At the mixer and at the upper weighing frame, walkways, and platform. 60 ° staircase with grating steps and railings to the mixer floor, with top landing and 60 ° grade tilt.



Weighing Hoppers

Cement Weighing Capacity : 600 kg

Cement Weighing Load-cells : 3 units 500 kg

Water Weighing Capacity : 300 kg

Water Weighing Load-cells : 2 units 500 kg

Additive Weighing Capacity : 1 x 20 lt

Additive Weighing Load-cells : 1 unit 100 kg

Weighing Hopper Equipments

Cement Discharge Valve : Ø 200 mm Butterfly Type - **WAM (Italy)**

Cement Hopper Vibrator : 1 unit - **OLI (Italy)**

Water Discharge Valve : Ø 150 Butterfly Type mm - **WAM (Italy)**

Additive Discharge Valve : 1 Unit - 1 ½" ball valve with actuator



Aggregate Storage Bin

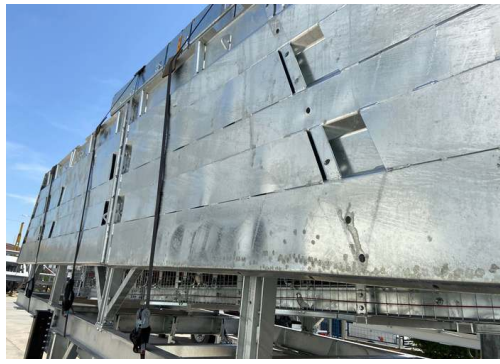
Aggregate Bins Capacity&Quantity : 40 m³ - 10 m³ capacity each one - 4 bins (Linear)

Bunker Discharging Gate(s) : 1 Gates in each bin - Totally 4 Discharging Gates

Vibrator Brand & Capacity : 350/3 - 2 Units **WAM-OLI (Italy)**

Pneumatic Piston Brand & Capacity : DSBC 80-250 Piston 4 Units - **Festo (Germany)**

Pneumatic Valve : 4 Units - **Festo (Germany)**



With trapezoidal bending for aggregate bin covers a high strength can be reached. In SEMIX's aggregate storage hoppers, extra reinforcement steels are welded to the empty spaces in the trapezoid. Thanks to this method, aggregate storage bins can serve long years.

Weighing Conveyor



Belt Quality : EP 125 / 4 coats

Load-cell : Capacity of 2000kg - 4 Units

Motor Power/Gearbox : 7,5 kW

Vibrator : 350/3 – 2 Units - **WAM-OLI (Italy)**

Drums : 10 mm Rubber Coated

Bearings : Lubrication Grease Nipple over SNH series

Scraper : V type with its weights -1 Unit

Emergency Stop Button : 1 Unit

Pull-rope Switch : 1 Unit

Aggregate Transfer Conveyor

Belt Quality : EP 125 / 4 coats

Motor Power : 11 kW - 1 Unit

Drums : 10 mm Rubber Coated

Bearings : Lubrication Grease Nipple over SNH series

Scraper : V type with its weights -1 Unit

Emergency Stop Button : 1 Unit

Pull-rope Switch : 1 Unit

Covering over the Belt : Semi-closed with steel sheet





Portability

Horizontal silos are an ideal storage solution for cement and other bulk materials. They are easily transportable and can be placed in a variety of locations. Unlike vertical silos, horizontal silos are portable and can be moved from one location to another. Horizontal silos are often used in construction sites where space is limited.



Track Your Cement & Batch Independently !

With its weighing system, you can track the stored cement and the silo can batch the cement according to the recipe. With the simple interface, silo's loading-discharging parameters can be easily changed according to the type of material.



Silo Equipments & Accessories

In SEMIX Horizontal Cement Silos, **WAM** products are being used in Screw Conveyors, Silo Top Filters, Air Jets, Vibrators, Pressure Sensors and Level Sensors.

