

SEMIX STATIONARY

STATIONARY CONCRETE BATCHING PLANTS



SMX-B-2310171311-14

PROPOSAL

PHILIP A TABONE

Anthony Tabone
at@anthonytabone.com
+356 7949 2045
Malta

Delivery

12-14 weeks

Validity Of Offer

08-11-2023

Terms Of Payment

%50 Advance, %50 Before Shipment



SEMIX ST STATIONARY 140 CONCRETE BATCHING PLANT

DESCRIPTION	AMOUNT	UNIT PRICE	TOTAL PRICE
1) SEMIX ST STATIONARY 140 CONCRETE BATCHING PLANT	1	€345,000.00	€345,000.00
1.1) TOTAL CAPACITY : 140 M ³ /H	1	-	-
1.2) MIXER CAPACITY : 3.33 M ³ TWIN SHAFT MIXER	1	-	-
1.3) MIXER MOTOR POWER : 2 X 55 KW	1	-	-
1.4) MIXING CHASSIS	1	-	-
1.5) AGGREGATE HOLDING HOPPER	1	-	-
1.6) CEMENT WEIGHING HOPPER: 2250 KG	1	-	-
1.7) WATER WEIGHING HOPPER: 1000 KG	1	-	-
1.8) ADDITIVE WEIGHING HOPPER: 50 KG	3	-	-
1.9) ADDITIVE PUMPS	3	-	-
1.10) AIR COMPRESSOR AND PNEUMATIC EQUIPMENT: 2400 LT	1	-	-
1.11) AGGREGATE BIN CAPACITY : (3 + 3) X 30 = 180 M ³ T TYPE	1	-	-
1.12) AGGREGATE WEIGHING SYSTEM: WEIGHING CONVEYOR BELT (1000X9100 MM)	2	-	-
1.13) AGGREGATE TRANSFER MECHANISM : BELT CONVEYOR (1000X21725MM) 30 DEG	1	-	-
1.14) AUTOMATION SYSTEM : SCHNEIDER (PC & PLC) WITH SCADA SOFTWARE	1	-	-
		Subtotal:	€345,000.00
		Discount:	-€20,000.00
		Total:	€325,000.00
TRANSPORTATION			
		SEMIX ST 140 - (EXW Ankara)	€0.00
		General Total:	€325,000.00

OPTION 1

DESCRIPTION	AMOUNT	UNIT PRICE	TOTAL PRICE
1) MIXER CHASSIS CLADDING (WITH TRAPEZOIDIAL SHEET)	1	€15,000.00	€15,000.00
		Subtotal:	€15,000.00
		Discount:	-€15,000.00
		Total:	€0.00

OPTION 2

DESCRIPTION	AMOUNT	UNIT PRICE	TOTAL PRICE
2) CEMENT SILO ADDITIONAL STEEL LEG (4 METERS)	3	€3,900.00	€11,700.00
		Subtotal:	€11,700.00
		Discount:	-€11,700.00
		Total:	€0.00

OPTION 3

DESCRIPTION	AMOUNT	UNIT PRICE	TOTAL PRICE
3) CEMENT SILO 150 TONS BOLTED TYPE	3	€41,000.00	€123,000.00
3.1) CEMENT SCREW CONVEYOR: Ø273X10.000 MM - WAM BRAND	1	-	-
3.2) CEMENT SILO EQUIPMENT SET- WAM BRAND	3	-	-
3.3) SILO TOP FILTER - WAM BRAND	3	-	-
		Subtotal:	€123,000.00
		Discount:	-€15,000.00
		Total:	€108,000.00



SEMIX Stationary 140 is equipped with 5000/3330 liters capacity Twin Shaft Concrete mixers or 4500/3000 liters Single Shaft Mixers (for 120 m³/h capacity). In SEMIX Concrete Mixers NiHard4 or Hardox 450 wearings are used according to the Concrete recipe's silicium ratio.

All SEMIX Aggregate Storage hoppers are bent trapezoidal shape for having an extra strength. The robust steel structure maintains long-life performance. Aggregates are weighed in the weighing conveyor which transfers aggregates to the transfer conveyor. Having two separate conveyors providing accuracy in weighing and performance for reaching higher Concrete outputs.

In SEMIX Stationary Concrete Batching Plants, above the mixer, the aggregate waiting hopper is located. This hopper holds the aggregate ready for the next batch and this provides time efficiency for the batching processes.

All SEMIX Concrete Batching Plants are being controlled by a SCADA system with a Schneider PLC integrated. Users can follow all used materials and integrate their CRM system. SEMIX's engineering team can intervene in the Automation system online to provide service.



Powerful Structure

SEMIX ST140 Stationary Concrete Batching Plants offers a robust steel form for high durability. **ST140** is able to serve in long lasting massive projects without any failure.

Easy Maintenance

Periodic maintenances can be easily done in **SEMIX ST140** Stationary Concrete Batching Plants thanks to its' user friendly design.



High Volumes of Concrete Production

SEMIX ST140 Stationary Concrete Batching Plants are designed for high volumes of concrete production capacities. For concrete mixer wearings **SEMIX** grants you the most durable material which has been formed from a special alloy.

Product Gallery



3.33 m³ SEMIX Twin Shaft Concrete Mixer

Compacted Concrete Per Batch: **3.33 m³**

Dry Volume: **5.0 m³**

Motor Power: **2 x 55 kW**

Mixing Blade : Ni-Hard 4 (**Chrome, Nickel special alloy cast iron**)

Stripping Blade : Ni-Hard 4 (**Chrome, Nickel special alloy cast iron**)

Internal Wearing : Ni-Hard 4 (**Chrome, Nickel special alloy cast iron**)

Ni-Hard 4 : In all SEMIX Concrete Mixers, Ni-Hard 4 alloys are being used in mixer blades. NiHard4 is a white cast iron product with nickel and chromium alloying, to give a hard chromium carbide in a martensitic matrix. This structure is ideal for products under conditions of high abrasiveness and high impact conditions.



Lubrication : **8 Points Automatic Lubrication System SKF - LINCOLN (German)**

Automatic lubrication system is integrated with the PLC and SCADA, the system periodically lubricates the necessary points and preventing from major problems.

Discharge Door : 1 Unit / **Hydraulic , 3 stage discharging**

Discharging in Emergency Situations : Present - Manual Pump

Water Dispenser : Present - 1 Unit

Emergency Stop Button : Present - 1 Unit

Maintenance Door Safety Switch : Present - 1 Unit



Aggregate Holding Hopper

Volume: 4.0 m³

Discharge: Pneumatic Discharge Flap

Aggregate holding hoppers are keeping the sand, gravel and big aggregates ready for the next concrete mix design. It increases the hourly concrete production capacity and provides continuous concrete batching.

Weighing Hoppers

Cement Weighing Capacity : 2250 kg

Cement Weighing Load-cells : 3 units

Water Weighing Capacity : 1000 kg

Water Weighing Load-cells : 2 units

Additive Weighing Capacity : 3 x 50 lt, 3 pump

Additive Weighing Load-cells : 1 unit



Weighing Hopper Equipments

Cement Discharge Valve : Butterfly Type - **WAM (Italy)**

Cement Hopper Vibrator : 1 unit - **OLI (Italy)**

Water Discharge Valve : Butterfly Type mm - **WAM (Italy)**

Additive Discharge Valve : 1 Unit - 1 ½" ball valve with actuator

Aggregate Storage Bins

Aggregate Bins Capacity&Quantity : 180m³ – 30 m³ capacity each one – 6 bins (3+3 T Type)

Bunker Discharging Gate(s) : 2 Gates in each bin – Totally 12 Discharging Gates

Vibrator Brand & Capacity : 2 Units **WAM-OLI (Italy)**

Pneumatic Piston Brand & Capacity : DSBC 80-250 Piston 12 Units – **Festo (Germany)**

Pneumatic Valve : 12 Units – **Festo (Germany)**



With trapezoidal bending for aggregate bin covers a high strength can be reached. In SEMIX's aggregate storage hoppers, extra reinforcement steels are welded to the empty spaces in the trapezoid. Thanks to this method, aggregate storage bins can serve long years.

Weighing Conveyor

Belt Quality : EP 125 / 4 coats

Vibrator : 1 Unit - **WAM-OLI (Italy)**

Drums : 10 mm Rubber Coated

Bearings : Lubrication Grease Nipple over SNH series

Scraper : V type with its weights -1 Unit

Emergency Stop Button : 1 Unit

Pull-rope Switch : 1 Unit



Transfer Conveyor

Belt Quality : EP 125 / 4 coats

Bearings : Lubrication Grease Nipple over SNH series

Scraper : V type with its weights -1 Unit

Emergency Stop Button : 1 Unit

Pull-rope Switch : 1 Unit

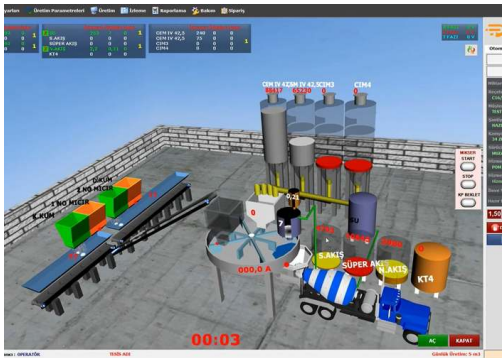
Covering over the Belt : Semi-closed with steel sheet

Grid Blasting Before Painting



All components of the SEMIX's concrete batching plants are treated with Grit Blasting process in SEMIX's certified grit blasting facility before the painting with steel balls. This method provides high surface finish quality after the painting.

CONTROL CABIN & AUTOMATION SYSTEM



Air conditioner, electrical connections and lightening - present at control cabin. Power board with manual control system provides production options completely at automatic mode as well as manual mode. Power board includes safety system protection switches for motors (phase protection relay), circuit breaker in case of overload. All electrical components are SCHNEIDER brand. Full set of computer for automation system with printer/UPS - present.

AUTOMATION SYSTEM:

Production Screen; You can monitor process of the operation on the animation screen, which is infrastructure by Microsoft DirectX. During the producing, required values, measurement values and differences of values will be shown. Following of the measured will be checked by the system during the process and it will be shown on automation screen with error sound if there is a problem. It can add or discharge water automatically without changing value of cement, during the process.

Entering; You can change the value of production to add or discharge while you are producing your order. You can portray unlimited customer, target, transfer with different drivers. Definition of silo and material can be changed and checked by the operator easily on the computer.

Settings; The automation system uses lots of parameters, that was designed to be understandable easily for any user; to get most efficient performance. Also, the settings can be locked not to be changed by workers.

History; When user want, he can checked old production records or details. And if there is need, the old production records or details can be printed any time.

Reporting; The program saves unlimited production record in database, so you can get report (production, receipt, customer, field work, etc.) with different time periods as daily, weekly, monthly, yearly when it is needed. Reports can be printed or forward them to excel or PDF files. Also, Stock reports can be get at the same way.

Delivery Note; You can print delivery note after or before the manufacture. If you don't want to print at that time, you can print them from the database when it is needed. Also you can split or merge manufactures' delivery note when it is needed them. After manufacturing, if customer changes, You can change the new customer and reprint a new delivery note.

User Permissions; You can limit operators or any user permissions when it is needed.

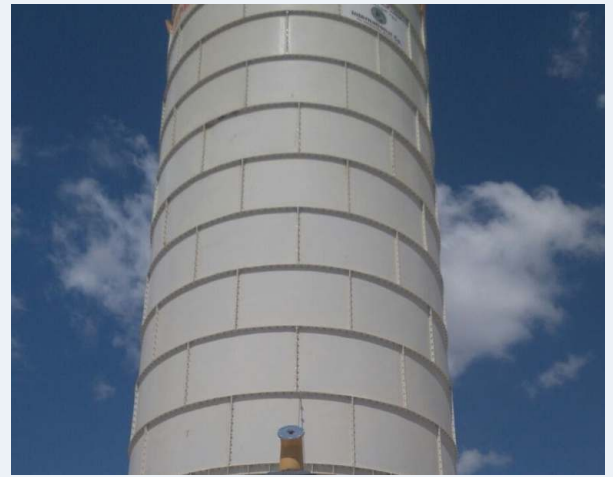
Manufacturing from Orders; You can define daily order list to the program and ordered lists can be produced through the program. You can monitor orders produced and remaining time by time.

Planned Manufacture; Before manufacturing is completed, you can enter the next production to program. If you save the next production record to program, after the last production finish, the next production will start automatically.

Remote Support; If you have an internet connection in cabin, we can help and solve problems quickly and you will have technical support about automation program.

Bolted Silos - 100 Tons 3 Units

Bolted silos are preferred due to its' compactness for transportation. It can be transported with containers for avoiding freight costs. Because of its modularity, Semix is able to manufacture bolted silos in a range between 100 to 2000 tons. Semix provides a mechanical supervisor for assembling the bolted silo correctly. Semix has succeeded to install bolted silos (which's capacities of more than 500 tons) in Peru, Israel, Germany, Dubai, and United Kingdom.



EQUIPMENTS FOR CEMENT SILO

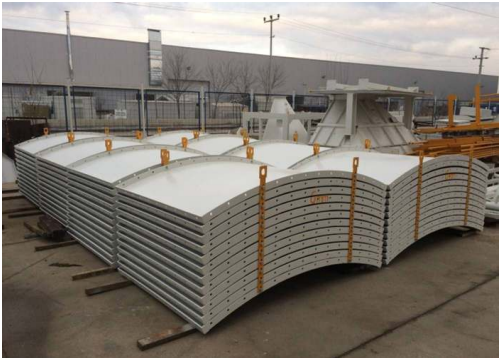
1. PRESSURE RELIEF VALVE: **WAM**
2. BUTTERFLY VALVE: **WAM**
3. PNEUMATIC ACTUATOR: **WAM**
4. MICRO SWITCH: **WAM**
5. LEVEL INDICATOR: **WAM**
6. SILO TOP FILTER: **WAM**
7. SAFETY VALVE: **WAM**
8. AIR JETS: **WAM**
9. FLAP: **WAM**

SCREW CONVEYORS

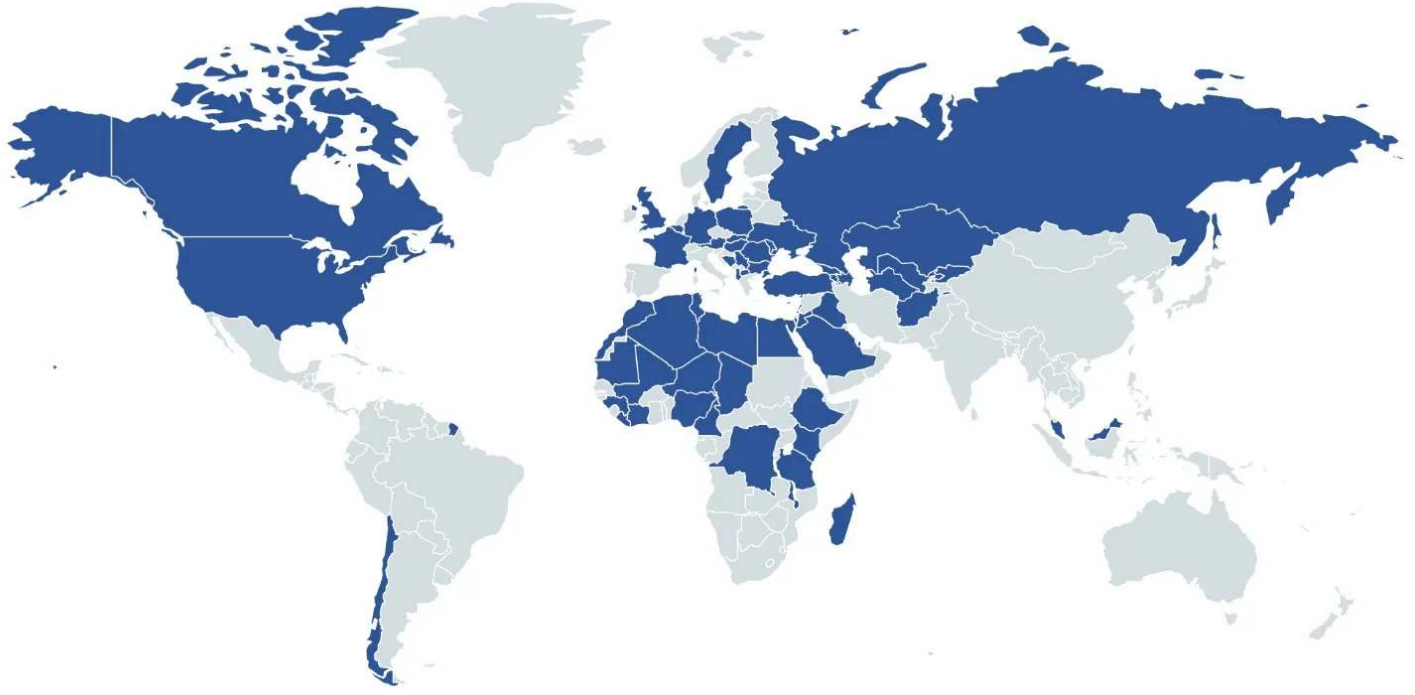
3 Units of **WAM** Screw Conveyors (Ø273/10000 mm) will be assembled for discharging the cement.



Product Gallery



References



HEIDELBERG
CEMENT

STRABAG

LAFARGE



HYUNDAI

ASTALDI

clinotech

Limak

kalyon

CENGİZ
İNŞAAT

KOLIN

KİPAŞ HOLDİNG

ONUR
TAHHİT TAHHİMLİK İNŞAAT TİC. VE SAN. A.Ş.

DANIŞ BETON
SİVA İNŞAAT SAN. TİC. A.Ş.

AKPINAR

çiftay