

SEMIX CT 80 (WITH SKIP HOIST)

COMPACT CONCRETE BATCHING PLANTS



SMX-N-2401091318-17

PROPOSAL

POLIDANO

Malta

Delivery

12 weeks

Validity Of Offer

24-01-2024

Terms Of Payment

%50 Advance, %50 Before Shipment



SEMIX CT 80 COMPACT CONCRETE BATCHING PLANT (SKIP HOIST)

DESCRIPTION	AMOUNT	UNIT PRICE	TOTAL PRICE
1) SEMIX CT 80 COMPACT CONCRETE BATCHING PLANT (SKIP HOIST)	1	€240,000.00	€240,000.00
1.1) MIXER TYPE & CAPACITY: 1.5 M ³ TWIN SHAFT MIXER	1	-	-
1.2) MIXER MOTOR POWER : 22 KW 2 UNITS	1	-	-
1.3) AGGREGATE BIN CAPACITY : 4 X 20 = 80 M ³ INLINE, SEMI-UNDEGROUNDED TYPE	1	-	-
1.4) AGGREGATE WEIGHING SYSTEM : CONVEYOR BELT	1	-	-
1.5) AGGREGATE TRANSFER MECHANISM: SKIP HOIST SYSTEM	1	-	-
1.6) CEMENT WEIGHING HOPPER: 800 KG	1	-	-
1.7) WATER WEIGHING HOPPER: 500 KG	1	-	-
1.8) ADDITIVE WEIGHING HOPPER: 25 LITRES	1	-	-
1.9) ADDITIVE PUMPS: 2	1	-	-
1.10) COMPRESSOR: PRESENT	1	-	-
1.11) AUTOMATION SYSTEM & SOFTWARE : COMPONENTS SCHNEIDER (FRENCH)	1	-	-
1.12) CONTROL CABINE: PRESENT	1	-	-
		Subtotal:	€240,000.00
		Total:	€240,000.00

TRANSPORTATION

		SEMIX CT 80 - (EXW Ankara)	€0.00
		General Total:	€240,000.00

OPTION 1

DESCRIPTION	AMOUNT	UNIT PRICE	TOTAL PRICE
1) CEMENT SILO 100 TONS BOLTED TYPE	2	€24,000.00	€48,000.00
1.1) SCREW CONVEYOR Ø273 MM	2	-	-
1.2) CEMENT SILO EQUIPMENTS SET & FILTER	2	-	-
		Subtotal:	€48,000.00
		Total:	€48,000.00
		General Total:	€48,000.00



Customized Options

SEMIX is able to design special projects for your requirements with a strong engineering team.

Powerful Structure

SEMIX CT80 Compact Concrete Batching Plants offers a robust steel form for high durability. **CT80** is able to serve in long lasting massive projects without any failure.



High Volumes of Concrete Production

SEMIX Concrete Batching Plants are designed for high volumes of concrete production capacities. For concrete mixer wearings **SEMIX** grants you the most durable material which has been formed from a special alloy.

Product Gallery



1.5 m³ SEMIX Twin Shaft Concrete Mixer

Compacted Concrete Per Batch: **1.5 m³**

Dry Volume: **2.25 m³**

Motor Power: **2 x 22 kW**



Mixing Blade : Ni-Hard 4 (**Chrome, Nickel special alloy cast iron**)

Stripping Blade : Ni-Hard 4 (**Chrome, Nickel special alloy cast iron**)

Internal Wearing : Ni-Hard 4 (**Chrome, Nickel special alloy cast iron**)

Ni-Hard 4 : In all SEMIX Concrete Mixers, Ni-Hard 4 alloys are being used in mixer blades. NiHard4 is a white cast iron product with nickel and chromium alloying, to give a hard chromium carbide in a martensitic matrix. This structure is ideal for products under conditions of high abrasiveness and high impactation conditions.

Discharge Door : 1 Unit / **Hydraulic , 3 stage discharging**

Discharging in Emergency Situations : Present - Manual Pump

Water Dispenser : Present - 1 Unit

Emergency Stop Button : Present - 1 Unit

Maintenance Door Safety Switch : Present - 1 Unit





Lubrication : **8** Points Automatic Lubrication System **SKF - LINCOLN (German)**

Automatic lubrication system is integrated with the PLC and SCADA, the system periodically lubricates the necessary points and preventing from major problems.

Weighing Hoppers

Cement Weighing Capacity : 800 kg

Cement Weighing Load-cells : 3 units x 500 kg

Water Weighing Capacity : 500 kg

Water Weighing Load-cells : 2 units x 500 kg

Additive Weighing Capacity : 1 x 25 lt

Additive Weighing Load-cells : 1 unit x 100 kg

Additive Pumps : 2 Units



Weighing Hopper Equipments

Cement Discharge Valve: Ø 350 mm Butterfly Type - **WAM (Italy)**

Cement Hopper Vibrator: 1 unit - **OLI (Italy)**

Water Discharge Valve: Ø 300 Butterfly Type mm - **WAM (Italy)**

Additive Discharge Valve: 1 Unit - 1 ½" ball valve with actuator

Aggregate Storage Bins

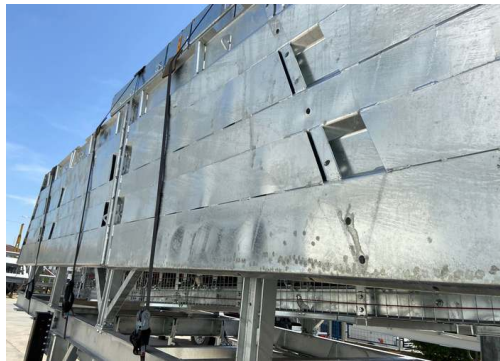
Aggregate Bins Capacity&Quantity : 80 m³ – 20 m³ capacity each one – 4 bins (Linear)

Bunker Discharging Gate(s) : 2 Gates in each bin – Totally 8 Discharging Gates

Vibrator Brand & Capacity : 2 Units **WAM-OLI (Italy)**

Pneumatic Piston Brand & Capacity : DSBC 80-250 Piston 8 Units – **Festo (Germany)**

Pneumatic Valve : 8 Units – **Festo (Germany)**



With trapezoidal bending for aggregate bin covers a high strength can be reached. In SEMIX's aggregate storage hoppers, extra reinforcement steels are welded to the empty spaces in the trapezoid. Thanks to this method, aggregate storage bins can serve long years.

Weighing Conveyor

Belt Quality : EP 125 / 4 coats

Load-cell : Capacity of 5000kg - 4 Units

Motor Power/Gearbox : 11 kW

Vibrator : 350/3 – 1 Unit - **WAM-OLI (Italy)**

Drums : 10 mm Rubber Coated

Bearings : Lubrication Grease Nipple over SNH series

Scraper : V type with its weights -1 Unit

Emergency Stop Button : 1 Unit

Pull-rope Switch : 1 Unit





Skip Hoist

Loading Capacity: 3 m³

Motor Power: 22 kW

Frequency inverter: 1 Unit Schneider brand (France)

Encoder system for level indicating of skip position

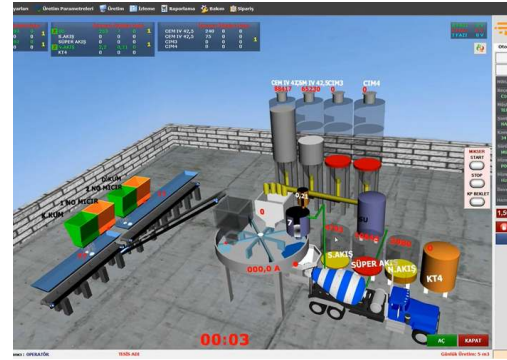
Parachute Safety Brake system for prevention of falling of skip

Grid Blasting Before Painting



All components of the SEMIX's concrete batching plants are treated with Grit Blasting process in SEMIX's certified grit blasting facility before the painting with steel balls. This method provides high surface finish quality after the painting.

AUTOMATION SYSTEM



Production Screen; You can monitor process of the operation on the animation screen, which is infrastructure by Microsoft DirectX. During the producing, required values, measurement values and differences of values will be shown. Following of the measured will be checked by the system during the process and it will be shown on automation screen with error sound if there is a problem.

Entering; You can change the value of production to add or discharge while you are producing your order. You can portray unlimited customer, target, transfer with different drivers. Definition of silo and material can be changed and checked by the operator easily on the computer.

Settings; The automation system uses lots of parameters, that was designed to be understandable easily for any user; to get most efficient performance. Also, the settings can be locked not to be changed by workers.

History; When user want, he can checked old production records or details. And if there is need, the old production records or details can be printed any time.

Reporting; The program saves unlimited production record in database, so you can get report (production, receipt, customer, field work, etc.) with different time periods as daily, weekly, monthly, yearly when it is needed. Reports can be printed or forward them to excel or PDF files. Also, Stock reports can be get at the same way.

Delivery Note; You can print delivery note after or before the manufacture. Also you can split or merge manufactures' delivery note when it is needed them. After manufacturing, if customer changes, You can change the new customer and reprint a new delivery note.

Manufacturing from Orders; You can define daily order list to the program and ordered lists can be produced through the program. You can monitor orders produced and remaining time by time.

Planned Manufacture; Before manufacturing is completed, you can enter the next production to program. If you save the next production record to program, after the last production finish, the next production will start automatically.

Internet; The program is designed to be controlled via the internet. By via internet, you can do reporting, editing, deleting or viewing (receipts, field work, customers, production details, etc.). Also, you can create, remove or edit order records for defined user rights. Reports may print or save on PDF, Excel by using via internet.

Remote Support; If you have an internet connection in cabin, we can help and solve problems quickly and you will have technical support about automation program.



Bolted Cement Silos 100 Tons - 2 Units

Bolted silos are preferred due to its' compactness for transportation. It can be transported with containers for avoiding freight costs. Because of its modularity, Semix is able to manufacture bolted silos in a range between 100 to 2000 tons. Semix provides a mechanical supervisor for assembling the bolted silo correctly. Semix has succeeded to install bolted silos (which's capacities of more than 500 tons) in Peru, Israel, Germany, Dubai, and United Kingdom.

SCREW CONVEYORS FOR CEMENT

2 Units of **WAM** Screw Conveyors (Ø273 mm) will be assembled for discharging the cement.



EQUIPMENTS FOR CEMENT

1. PRESSURE RELIEF VALVE: **WAM**
2. BUTTERFLY VALVE: **WAM**
3. PNEUMATIC ACTUATOR: **WAM**
4. MICRO SWITCH: **WAM**
5. LEVEL INDICATOR: **WAM**
6. SILO TOP FILTER: **WAM**
7. SAFETY VALVE: **WAM**
8. AIR JETS: **WAM**
9. FLAP: **WAM**

Product Gallery

