

SEMIX MOBILE 115 S4

MOBILE CONCRETE BATCHING PLANTS



SMX-J-2406011014-1

PROPOSAL

FLYURA İNŞAAT

Flyura Seifullina
xxxxfly@gmail.com
+905497351513
Turkey

Delivery

10-14 weeks

Validity Of Offer

16-06-2024

Terms Of Payment

%50 Advance, %50 Before Shipment



MOBILE 115 S4

DESCRIPTION	AMOUNT	UNIT PRICE	TOTAL PRICE
1) MOBILE 115 S4	1	€248,000.00	€248,000.00
1.1) 115S4 MOBILE CONCRETE BATCHING PLANT'S TOTAL CAPACITY: 100-112 M ³ /H	1	-	-
1.2) MIXER TYPE & CAPACITY: 3375/2250 (2.25 M ³) SEMIX TWIN SHAFT CONCRETE MIXER	1	-	-
1.3) MIXER MOTOR POWER : 2 X 45 KW	1	-	-
1.4) CEMENT WEIGHING HOPPER: 1100 KG	1	-	-
1.5) WATER WEIGHING HOPPER: 600 KG	1	-	-
1.6) ADDITIVE WEIGHING HOPPER: 20-40 LITRES	1	-	-
1.7) ADDITIVE PUMPS: 1	1	-	-
1.8) AGGREGATE BIN CAPACITY : 4 X 20 = 80 M ³	1	-	-
1.9) AGGREGATE WEIGHING SYSTEM: WEIGHING CONVEYOR BELT	1	-	-
1.10) AGGREGATE TRANSFER MECHANISM : BELT CONVEYOR	1	-	-
1.11) COMPRESSOR : 1800 LT/MIN	1	-	-
1.12) AUTOMATION SYSTEM : SCHNEIDER (PC & PLC)	1	-	-
1.13) CONTROL CABINE: PRESENT	1	-	-
		Subtotal:	€248,000.00
		Discount:	-€16,000.00
		Total:	€232,000.00
TRANSPORTATION			
		Mobile 115 S4 - (CIP Trabzon)	€5,000.00
		General Total:	€237,000.00

OPTION 1

DESCRIPTION	AMOUNT	UNIT PRICE	TOTAL PRICE
1) CEMENT SILO 100 TONS BOLTED TYPE	2	€23,000.00	€46,000.00
1.1) SILO EQUIPMENTS SET	2	-	-
1.2) SILO FILTER	2	-	-
1.3) SCREW CONVEYOR Ø273 MM	2	-	-
		Subtotal:	€46,000.00
		Total:	€46,000.00
TRANSPORTATION			
		Silo - (CIP Trabzon)	€1,000.00
		General Total:	€47,000.00

OPTION 2

DESCRIPTION	AMOUNT	UNIT PRICE	TOTAL PRICE
2) RECYCLING SYSTEM	1	€20,000.00	€20,000.00
		Subtotal:	€20,000.00

OPTION 2

DESCRIPTION	AMOUNT	UNIT PRICE	TOTAL PRICE
		Total:	€20,000.00
TRANSPORTATION			
		Recycling System - (CIP Trabzon)	€1,000.00
		General Total:	€21,000.00



SEMIX Mobile 115S4 is equipped with 3375/2250 liters capacity Concrete mixers which can be a single shaft, twin shaft, or planetary type mixers. In SEMIX Concrete Mixers NiHard4 or Hardox 450 wearings are used according to the Concrete recipe's silicium ratio.

All SEMIX Aggregate Storage hoppers are bent trapezoidal shape for having an extra strength. Aggregate storage hoppers can be fed by wheeled loaders with a single ramp. Aggregates are weighed in the weighing conveyor which transfers aggregates to the transfer conveyor. Having two separate conveyors providing accuracy in weighing and performance for reaching higher Concrete outputs.

All SEMIX Concrete Batching Plants are being controlled by a SCADA system with a Schneider PLC integrated. Users can follow all used materials and integrate it their CRM system. SEMIX's engineering team can intervene in the Automation system online to provide service.



Patented Design

In SEMIX Mobile 115S4 batching plants, only one ramp needed for feeding aggregate bins thanks to its' patented design. Inline aggregate bin structure eliminates the need of installing a pre-feeding conveyor.

High Mobility

Semix Mobile 115S4 can be rapidly assembled in 3-4 days with its' compact design. It can be relocated to another project easily because of its' high mobility.



Fast Installation

SEMIX Mobile 115S4 can be rapidly installed into determined area in 3 days both mechanically and electrically. Experienced SEMIX assembly staff will be your guide during installation at all times.

Product Gallery





SEMIX 2.25 m³ Twin Shaft Concrete Mixer

Brand & Model : Semix TSM 3375/2250 It – Twin Shaft Mixer

Loading Capacity : 3375 It

Compacted Concrete Capacity : 2250 It

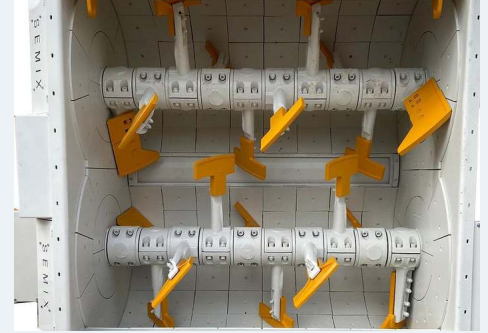
Electric Motor : 2 x 45 kW

Mixing Blade : Ni-Hard 4 (**Chrome, Nickel special alloy cast iron**)

Stripping Blade : Ni-Hard 4 (**Chrome, Nickel special alloy cast iron**)

Internal Wearing : Ni-Hard 4 (**Chrome, Nickel special alloy cast iron**)

Ni-Hard 4 : In all SEMIX Concrete Mixers, Ni-Hard 4 alloys are being used in mixer blades. NiHard4 is a white cast iron product with nickel and chromium alloying, to give a hard chromium carbide in a martensitic matrix. This structure is ideal for products under conditions of high abrasiveness and high impaction conditions.



Lubrication : **8 Points Automatic Lubrication System SKF - LINCOLN (German)**

Automatic lubrication system is integrated with the PLC and SCADA, the system periodically lubricates the necessary points and preventing from major problems.

Discharge Door : 1 Unit / **Hydraulic , 3 stage discharging**

Discharging in Emergency Situations : Present - Manual Pump

Water Dispenser : Present - 1 Unit

Emergency Stop Button : Present - 1 Unit

Maintenance Door Safety Switch : Present - 1 Unit





Weighing Hoppers

- Cement Weighing Capacity : 1100 kg
- Cement Weighing Load-cells : 3 units 1000 kg
- Water Weighing Capacity : 600 kg
- Water Weighing Load-cells : 2 units 500 kg
- Additive Weighing Capacity : 1 x 20 lt (optional hopper can be added)
- Additive Weighing Load-cells : 1 unit 100 kg

Cement Discharge Valve : Ø 200 mm Butterfly Type - **WAM (Italy)**

Cement Hopper Vibrator : 1 unit - **OLI (Italy)**

Water Discharge Valve : Ø 150 Butterfly Type mm - **WAM (Italy)**

Additive Discharge Valve : 1 Unit - 1 ½" ball valve with actuator



Aggregate Storage Bins



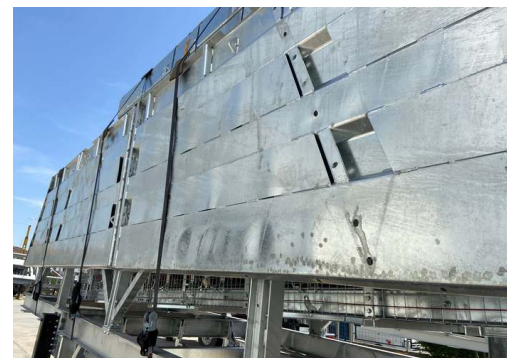
Aggregate Bins Capacity&Quantity : 80 m³ (20 m³ capacity each one – 4 bins (Linear))

Bunker Discharging Gate(s) : 2 Gates in each bin – Totally 8 Discharging Gates

Vibrator Brand & Capacity : 350/3 – 2 Units **WAM-OLI (Italy)**

Pneumatic Piston Brand & Capacity : DSBC 80-250 Piston 8 Units – **Festo (Germany)**

Pneumatic Valve : 8 Units – **Festo (Germany)**



With trapezoidal bending for aggregate bin covers a high strength can be reached. In SEMIX's aggregate storage hoppers, extra reinforcement steels are welded to the empty spaces in the trapezoid. Thanks to this method, aggregate storage bins can serve long years.



Weighing Conveyor

Belt Quality : EP 125 / 4 coats
 Load-cell : 4 Units
 Motor Power/Gearbox : 15 kW
 Vibrator : 350/3 – 2 Units - **WAM-OLI (Italy)**
 Drums : 10 mm Rubber Coated
 Bearings : Lubrication Grease Nipple over SNH series
 Scraper : V type with its weights -1 Unit
 Emergency Stop Button : 1 Unit
 Pull-rope Switch : 1 Unit

Transfer Conveyor

Belt Quality : EP 125 / 4 coats
 Motor Power : 22 kW - 1 Unit
 Drums : 10 mm Rubber Coated
 Bearings : Lubrication Grease Nipple over SNH series
 Scraper : V type with its weights -1 Unit
 Emergency Stop Button : 1 Unit
 Pull-rope Switch : 1 Unit
 Covering over the Belt : Semi-closed with steel sheet

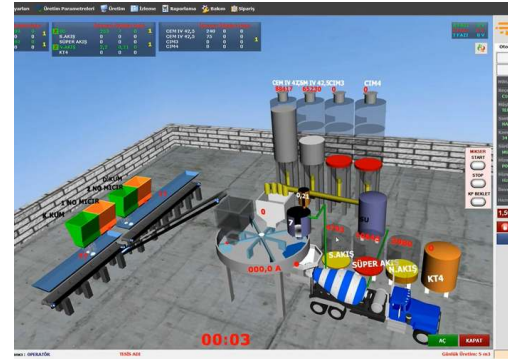


Grid Blasting Before Painting



All components of the SEMIX's concrete batching plants are treated with Grit Blasting process in SEMIX's certified grit blasting facility before the painting with steel balls. This method provides high surface finish quality after the painting.

AUTOMATION SYSTEM



Air conditioner, electrical connections and lightening - present at control cabin. Power board with manual control system provides production options completely at automatic - mode as well as manual mode. Power board includes safety system protection switches for motors (phase protection relay), circuite breaker in case of overload. All electrical components are SCHNEIDER brand. Full set of computer for automation system with printer/UPS - present.

AUTOMATION SYSTEM:

Production Screen; You can monitor process of the operation on the animation screen, which is infrastructure by Microsoft DirectX. During the producing, required values, measurement values and differences of values will be shown. Following of the measured will be checked by the system during the process and it will be shown on automation screen with error sound if there is a problem. It can add or discharge water automatically without changing value of cement, during the process.

Entering; You can change the value of production to add or discharge while you are producing your order. You can portray unlimited customer, target, transfer with different drivers. Definition of silo and material can be changed and checked by the operator easily on the computer.

Settings; The automation system uses lots of parameters, that was designed to be understandable easily for any user; to get most efficient performance. Also, the settings can be locked not to be changed by workers.

History; When user want, he can checked old production records or details. And if there is need, the old production records or details can be printed any time.

Reporting; The program saves unlimited production record in database, so you can get report (production, receipt, customer, field work, etc.) with different time periods as daily, weekly, monthly, yearly when it is needed. Reports can be printed or forward them to excel or PDF files. Also, Stock reports can be get at the same way.

Delivery Note; You can print delivery note after or before the manufacture. If you don't want to print at that time, you can print them from the database when it is needed. Also you can split or merge manufactures' delivery note when it is needed them. After manufacturing, if customer changes, You can change the new customer and reprint a new delivery note.

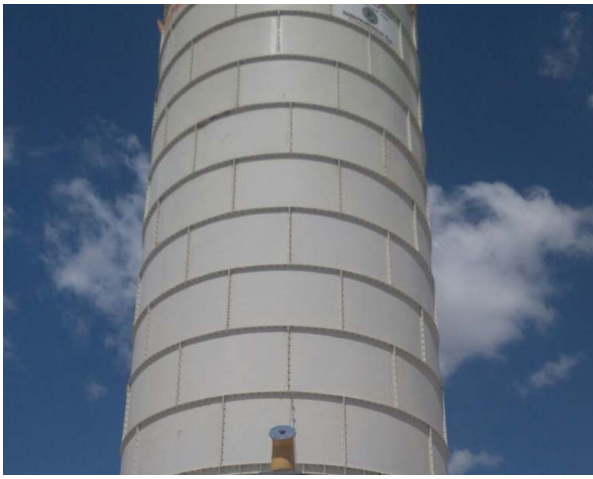
User Permissions; You can limit operators or any user permissions when it is needed.

Manufacturing from Orders; You can define daily order list to the program and ordered lists can be produced through the program. You can monitor orders produced and remaining time by time.

Planned Manufacture; Before manufacturing is completed, you can enter the next production to program. If you save the next production record to program, after the last production finish, the next production will start automatically.

Internet; The program is designed to be controlled via the internet. By via internet, you can do reporting, editing, deleting or viewing (receipts, field work, customers, production details, etc.). Also, you can create, remove or edit order records for defined user rights. Reports may print or save on PDF, Excel by using via internet. For using via internet, you should get a static ip. Infrastructure for internet (staticip, internet line, etc.) will be provided by yourself. P.S.: Internet features are optional and requires additional charge.

Remote Support; If you have an internet connection in cabin, we can help and solve problems quickly and you will have technical support about automation program

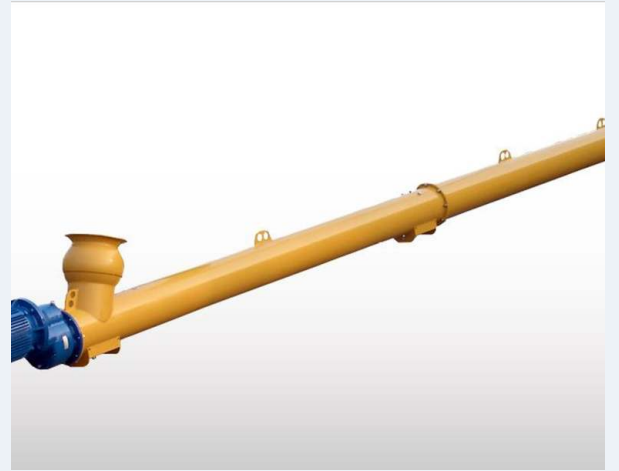


Bolted Silos

Bolted silos are preferred due to its' compactness for transportation. It can be transported with containers for avoiding freight costs. Because of its modularity, Semix is able to manufacture welded silos in a range between 100 to 2000 tons. Semix provides a mechanical supervisor for assembling the bolted silo correctly. Semix has succeeded to install bolted silos (which's capacities of more than 500 tons) in Peru, Israel, Germany, Dubai, and United Kingdom.

SCREW CONVEYORS

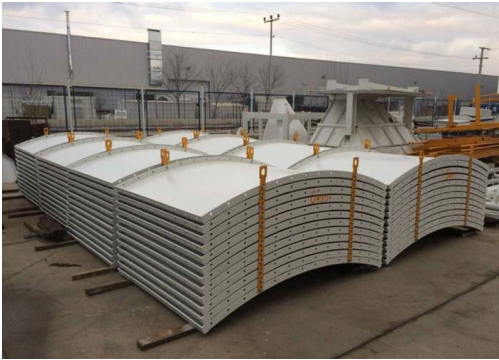
4 Units of **WAM** Screw Conveyors (Ø323/11500 mm) will be assembled for discharging the cement.



EQUIPMENTS

1. PRESSURE RELIEF VALVE: **WAM**
2. BUTTERFLY VALVE: **WAM**
3. PNEUMATIC ACTUATOR: **WAM** -
4. MICRO SWITCH: **WAM**
5. LEVEL INDICATOR: **WAM**
6. SILO TOP FILTER: **WAM**
7. SAFETY VALVE: **WAM**
8. AIR JETS: **WAM**
9. FLAP: **WAM**

Product Gallery





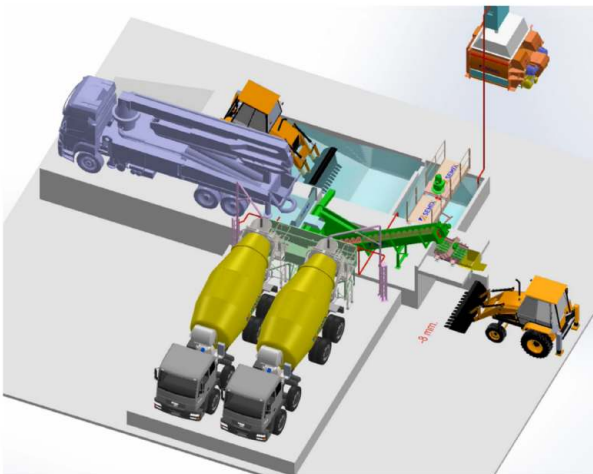
A Simple Solution

ReCycrete® (Screw Type Concrete Reclaimer) is a machine that recycles the leftover wet concrete. It works by separating the aggregate and slurry water components of the wet concrete, thereby allowing the usage of the aggregate and water in the next concrete batches. The screw type wet concrete recycling unit is a popular choice for many businesses because it is easy to operate and requires minimal maintenance.



Concrete Recycling Capacity

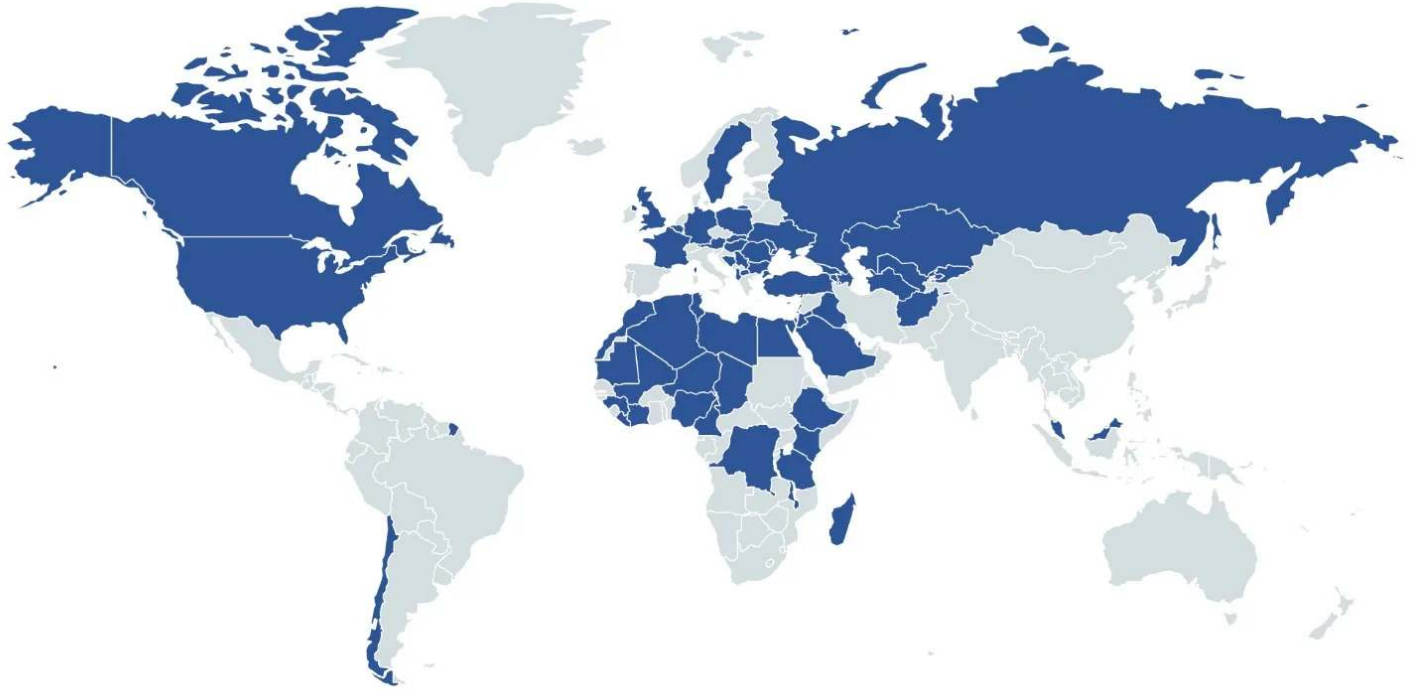
Wet Concrete Recycling capacity can reach up to 10 cubic meters per hour.



Two Optional Discharge Hoppers

Two Optional Discharge Chutes will allow the discharges of Concrete Mixers and Concrete Pumps at the same time

References



HEIDELBERG
CEMENT

STRABAG

LAFARGE



HYUNDAI

ASTALDI

clinotech

Limak

kalyon

CENGİZ
İNŞAAT

KOLIN

KİPAŞ HOLDİNG

ONUR
TAHHİT TAHHİMLİK İNŞAAT TİC. VE SAN. A.Ş.

DANIŞ BETON
SİVİL İNŞAAT SAN. TİC. A.Ş.

AKPINAR

çiftay