

SEMIX CT130

STATIONARY CONCRETE BATCHING PLANTS



SMX-M-2307251456-5

PROPOSAL

ADAMAS CONTRACTORS

Erdinç Bey
abay@adamascontractors.ro
+40 734 167 272
Romania

Delivery

8-12 WEEKS

Validity Of Offer

09-08-2023

Terms Of Payment

%50 Advance, %50 Before Shipment



SEMIX CT 130

DESCRIPTION	AMOUNT	UNIT PRICE	TOTAL PRICE
1) SEMIX CT 130 STATIONARY CONCRETE BATCHING PLANT	1	€265,000.00	€265,000.00
1.1) TOTAL CAPACITY : 130 M ³ /H	1	-	-
1.2) MIXER CAPACITY : 3.33 M ³ TWIN SHAFT MIXER	1	-	-
1.3) MIXER MOTOR POWER : 2 X 55 KW	1	-	-
1.4) CEMENT WEIGHING HOPPER: 1800 KG	1	-	-
1.5) WATER WEIGHING HOPPER: 1000 KG	1	-	-
1.6) ADDITIVE WEIGHING HOPPER: 40 LITRES	1	-	-
1.7) ADDITIVE PUMPS: 1	1	-	-
1.8) COMPRESSOR: 2400 LT	1	-	-
1.9) AGGREGATE BIN CAPACITY : 4 X 30 = 120 M ³	1	-	-
1.10) AGGREGATE WEIGHING SYSTEM: WEIGHING CONVEYOR BELT	1	-	-
1.11) AGGREGATE TRANSFER MECHANISM : CONVEYOR BELT	1	-	-
1.12) AUTOMATION SYSTEM : SCHNEIDER (PC & PLC)	1	-	-
		Subtotal:	€265,000.00
		Discount:	-€25,000.00
		Total:	€240,000.00
TRANSPORTATION			
		SEMIX CT130 - (EXW Ankara)	€0.00
		General Total:	€240,000.00

OPTION 1

DESCRIPTION	AMOUNT	UNIT PRICE	TOTAL PRICE
1) CEMENT SILO 100 TONS BOLTED TYPE	3	€23,000.00	€69,000.00
1.1) SILO EQUIPMENTS SET & FILTER	3	-	-
1.2) SCREW CONVEYOR Ø 273 MM	3	-	-
		Subtotal:	€69,000.00
		Total:	€69,000.00
TRANSPORTATION			
		General Total:	€69,000.00



Powerful Structure

SEMIX CT130 Concrete Batching Plants offers a robust steel form for high durability. SEMIX CT130 is able to serve in long lasting massive projects without any failure.

Easy Maintenance

Periodic maintenances can be easily done in **SEMIX** CT130 Concrete Batching Plants thanks to its' user friendly design.



High Volumes of Concrete Production

SEMIX CT130 Concrete Batching Plants are designed for high volumes of concrete production capacities. For concrete mixer wearings **SEMIX** grants you the most durable material which has been formed from a special alloy.



Product Gallery



3.33 m³ SEMIX Twin Shaft Concrete Mixer

Compacted Concrete Per Batch: **3.33 m³**

Dry Volume: **5.0 m³**

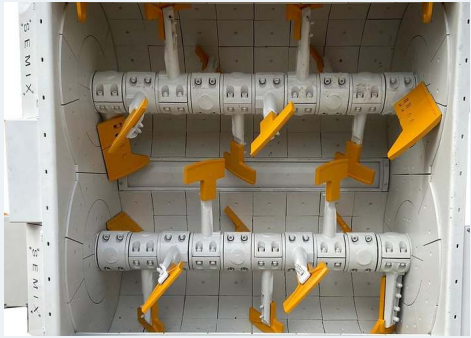
Motor Power: **2 x 55 kW**

Mixing Blade : Ni-Hard 4 (**Chrome, Nickel special alloy cast iron**)

Stripping Blade : Ni-Hard 4 (**Chrome, Nickel special alloy cast iron**)

Internal Wearing : Ni-Hard 4 (**Chrome, Nickel special alloy cast iron**)

Ni-Hard 4 : In all SEMIX Concrete Mixers, Ni-Hard 4 alloys are being used in mixer blades. NiHard4 is a white cast iron product with nickel and chromium alloying, to give a hard chromium carbide in a martensitic matrix. This structure is ideal for products under conditions of high abrasiveness and high impaction conditions.



Lubrication : **8 Points Automatic Lubrication System SKF - LINCOLN (German)**

Automatic lubrication system is integrated with the PLC and SCADA, the system periodically lubricates the necessary points and preventing from major problems.

Discharge Door : 1 Unit / **Hydraulic , 3 stage discharging**

Discharging in Emergency Situations : Present - Manual Pump

Water Dispenser : Present - 1 Unit

Emergency Stop Button : Present - 1 Unit

Maintenance Door Safety Switch : Present - 1 Unit



Weighing Hoppers

Cement Weighing Capacity : 1800 kg

Cement Weighing Load-cells : 3 units

Water Weighing Capacity : 1000 kg

Water Weighing Load-cells : 2 units

Additive Weighing Capacity : 1 x 40 lt

Additive Weighing Load-cells : 1 unit



Weighing Hopper Equipments

Cement Discharge Valve : Butterfly Type - **WAM (Italy)**

Cement Hopper Vibrator : 1 unit - **OLI (Italy)**

Water Discharge Valve : Butterfly Type mm - **WAM (Italy)**

Additive Discharge Valve : 1 Unit - 1 1/2" ball valve with actuator



Aggregate Storage Bins

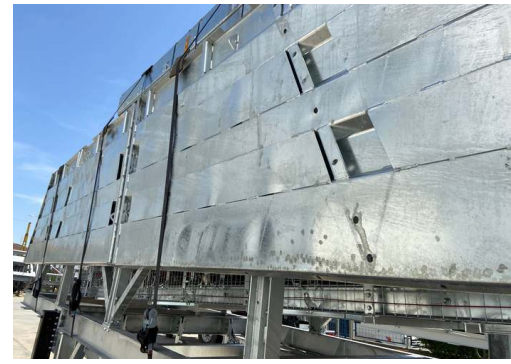
Aggregate Bins Capacity&Quantity : 120 m³ – 30 m³ capacity each one – 4 bins (Linear)

Bunker Discharging Gate(s) : 2 Gates in each bin – Totally 8 Discharging Gates

Vibrator Brand & Capacity : 2 Units **WAM-OLI (Italy)**

Pneumatic Piston Brand & Capacity : DSBC 80-250 Piston 8 Units – **Festo (Germany)**

Pneumatic Valve : 8 Units – **Festo (Germany)**



With trapezoidal bending for aggregate bin covers a high strength can be reached. In SEMIX's aggregate storage hoppers, extra reinforcement steels are welded to the empty spaces in the trapezoid. Thanks to this method, aggregate storage bins can serve long years.

Weighing Conveyor



Belt Quality : EP 125 / 4 coats

Vibrator : 1 Unit - **WAM-OLI (Italy)**

Drums : 10 mm Rubber Coated

Bearings : Lubrication Grease Nipple over SNH series

Scraper : V type with its weights -1 Unit

Emergency Stop Button : 1 Unit

Pull-rope Switch : 1 Unit

Transfer Conveyor

Belt Quality : EP 125 / 4 coats

Bearings : Lubrication Grease Nipple over SNH series

Scraper : V type with its weights -1 Unit

Emergency Stop Button : 1 Unit

Pull-rope Switch : 1 Unit

Covering over the Belt : Semi-closed with steel sheet

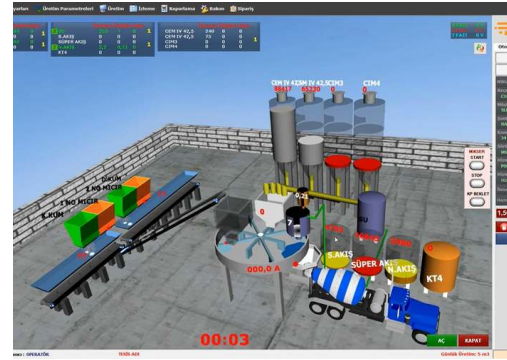


Grid Blasting Before Painting



All components of the SEMIX's concrete batching plants are treated with Grit Blasting process in SEMIX's certified grit blasting facility before the painting with steel balls. This method provides high surface finish quality after the painting.

CONTROL CABIN & AUTOMATION SYSTEM



Air conditioner, electrical connections and lightening - present at control cabin. Power board with manual control system provides production options completely at automatic - mode as well as manual mode. Power board includes safety system protection switches for motors (phase protection relay), circuit breaker in case of overload. All electrical components are SCHNEIDER brand. Full set of computer for automation system with printer/UPS - present.

AUTOMATION SYSTEM:

Production Screen; You can monitor process of the operation on the animation screen, which is infrastructure by Microsoft DirectX. During the producing, required values, measurement values and differences of values will be shown. Following of the measured will be checked by the system during the process and it will be shown on automation screen with error sound if there is a problem. It can add or discharge water automatically without changing value of cement, during the process.

Entering; You can change the value of production to add or discharge while you are producing your order. You can portray unlimited customer, target, transfer with different drivers. Definition of silo and material can be changed and checked by the operator easily on the computer.

Settings; The automation system uses lots of parameters, that was designed to be understandable easily for any user; to get most efficient performance. Also, the settings can be locked not to be changed by workers.

History; When user want, he can checked old production records or details. And if there is need, the old production records or details can be printed any time.

Reporting; The program saves unlimited production record in database, so you can get report (production, receipt, customer, field work, etc.) with different time periods as daily, weekly, monthly, yearly when it is needed. Reports can be printed or forward them to excel or PDF files. Also, Stock reports can be get at the same way.

Delivery Note; You can print delivery note after or before the manufacture. If you don't want to print at that time, you can print them from the database when it is needed. Also you can split or merge manufactures' delivery note when it is needed them. After manufacturing, if customer changes, You can change the new customer and reprint a new delivery note.

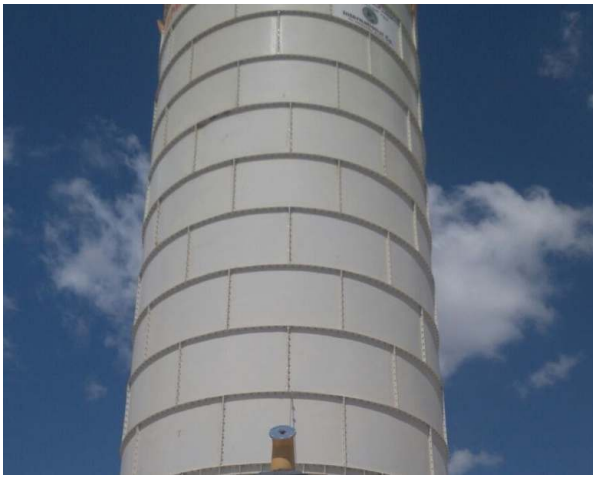
User Permissions; You can limit operators or any user permissions when it is needed.

Manufacturing from Orders; You can define daily order list to the program and ordered lists can be produced through the program. You can monitor orders produced and remaining time by time.

Planned Manufacture; Before manufacturing is completed, you can enter the next production to program. If you save the next production record to program, after the last production finish, the next production will start automatically.

Internet; The program is designed to be controlled via the internet. By via internet, you can do reporting, editing, deleting or viewing (receipts, field work, customers, production details, etc.). Also, you can create, remove or edit order records for defined user rights. Reports may print or save on PDF, Excel by using via internet. For using via internet, you should get a static ip. Infrastructure for internet (staticip, internet line, etc.) will be provided by yourself. P.S.: Internet features are optional and requires additional charge.

Remote Support; If you have an internet connection in cabin, we can help and solve problems quickly and you will have technical support about automation program.



Bolted Silos - 100 tons 3 units

Bolted silos are preferred due to its' compactness for transportation. It can be transported with containers for avoiding freight costs. Because of its modularity, Semix is able to manufacture bolted silos in a range between 100 to 2000 tons. Semix provides a mechanical supervisor for assembling the bolted silo correctly. Semix has succeeded to install bolted silos (which's capacities of more than 500 tons) in Peru, Israel, Germany, Dubai, and United Kingdom.

EQUIPMENTS - 3 SET

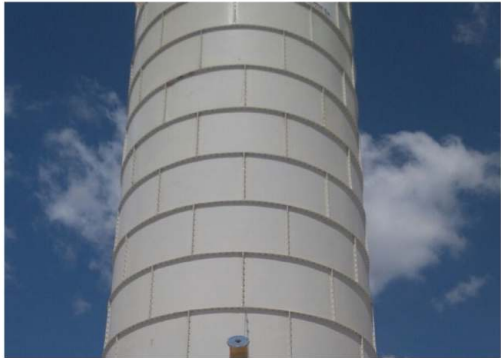
1. PRESSURE RELIEF VALVE: **WAM**
2. BUTTERFLY VALVE: **WAM**
3. PNEUMATIC ACTUATOR: **WAM**
4. MICRO SWITCH: **WAM**
5. LEVEL INDICATOR: **WAM**
6. SILO TOP FILTER: **WAM**
7. SAFETY VALVE: **WAM**
8. AIR JETS: **WAM**
9. FLAP: **WAM**



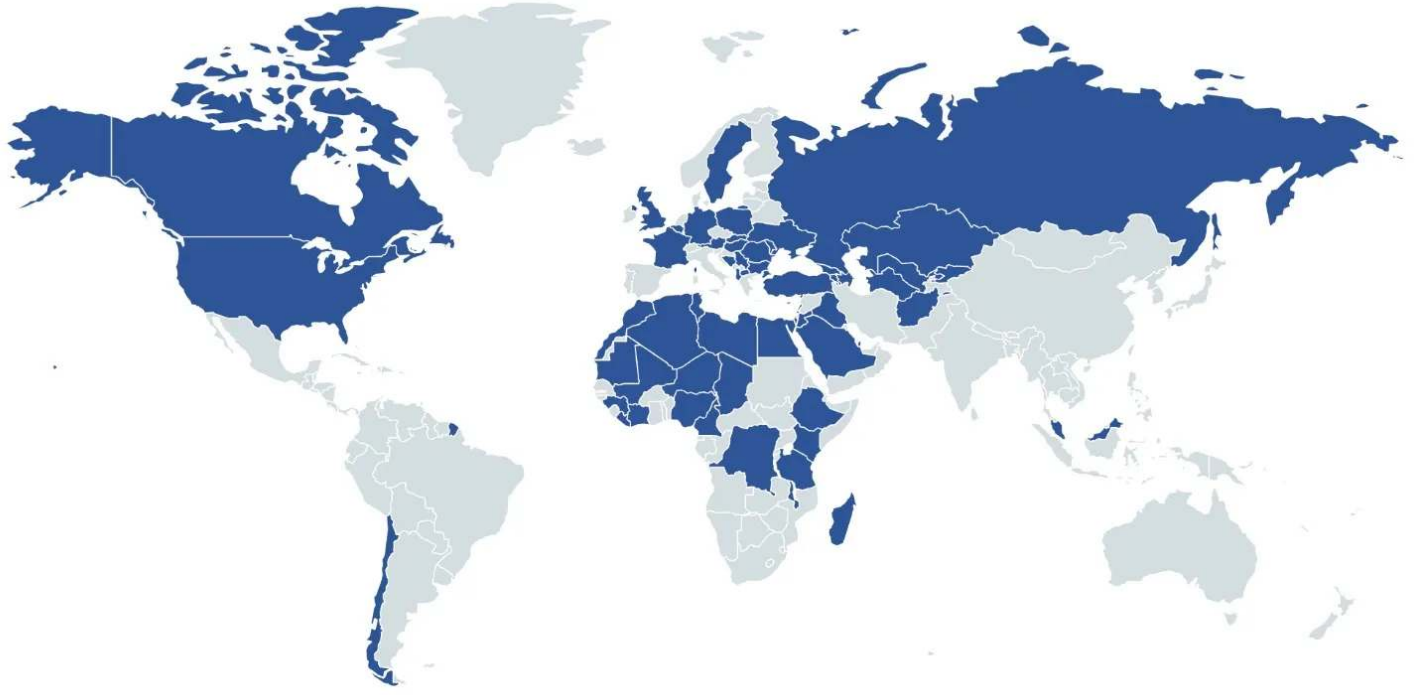
SCREW CONVEYORS

3 Units of **WAM** Screw Conveyors (Ø273 mm) will be assembled for discharging the cement.

Product Gallery



References



HEIDELBERG
CEMENT

STRABAG

LAFARGE



HYUNDAI

ASTALDI

clinotech

Limak

kalyon

CENGİZ
İNŞAAT

KOLİN

KİPAŞ HOLDİNG

ONUR
TAHHÜT TAHHÜTLÜK İNŞAAT TİC. VE SAN. A.Ş.

DANIŞ BETON
DİVA İNŞAAT SAN. TİC. A.Ş.

AKPINAR

çiftay