

SEMIX 1.5 M³ PLANETARY MIXER

CONCRETE BATCHING PLANT



SMX-B-2303291048-3

PROPOSAL

TUBLOROM SRL

Catalin Costache Dulbastru

catalin@tublalom.ro

004.0742.042.743

Romania

Delivery

10-12 weeks

Validity Of Offer

13-04-2023

Terms Of Payment

%50 Advance, %50 Before Shipment



SEMIX 1.5 M³ PLANETARY MIXER CONCRETE BATCHING PLANT

DESCRIPTION	AMOUNT	UNIT PRICE	TOTAL PRICE
1) SEMIX 1.5 M ³ PLANETARY MIXER CONCRETE BATCHING PLANT	1	€257,000.00	€257,000.00
1.1) TOTAL CAPACITY : 90 M ³ /H FOR READY-MIX CONCRETE	1	-	-
1.2) MIXER TYPE & CAPACITY: 1.5 M ³ PLANETARY MIXER	1	-	-
1.3) MIXER MOTOR POWER : 75 KW	1	-	-
1.4) MOISTURE PROBE FOR MIXER	1	-	-
1.5) TEMPERATURE SENSOR FOR MIXER	1	-	-
1.6) FILTER FOR MIXER	1	-	-
1.7) AGGREGATE BIN CAPACITY : 4 X 15 = 60 M ³ SEMI-UNDERGROUNDED	1	-	-
1.8) AGGREGATE WEIGHING SYSTEM: CONVEYOR BELT	1	-	-
1.9) AGGREGATE BINS MICROWAVE TYPE MOISTURE PROBE	1	-	-
1.10) AGGREGATE TRANSFER MECHANISM: SKIP HOIST	1	-	-
1.11) CEMENT WEIGHING HOPPER WITH FILTER: 800 KG	1	-	-
1.12) WATER WEIGHING HOPPER: 450 KG	1	-	-
1.13) ADDITIVE WEIGHING HOPPER: 20 LITRES	1	-	-
1.14) ADDITIVE PUMPS: 2	1	-	-
1.15) COMPRESSOR: PRESENT	1	-	-
1.16) CONTROL CABINE: PRESENT	1	-	-
1.17) AUTOMATION SYSTEM : SEMIX CONTROL SOFTWARE WITH SCHNEIDER ELECTRICAL PANEL (PC & PLC)	1	-	-
		Subtotal:	€257,000.00
		Discount:	-€12,000.00
		Total:	€245,000.00
TRANSPORTATION			
		Concrete Batching Plant - (EXW Ankara)	€0.00
		General Total:	€245,000.00



Overview of Concrete Batching Plant

Model : 1.5 m³ Planetary Mixer Concrete Batching Plant (with Skip Hoist)

Theoretical Production Capacity : 90 m³/h (30 seconds of mixing, C20 type of Concrete)*

Aggregate Storage Bins : 4 bins total 60 m³ storage capacity

Mixer Capacity : 1.5 m³ compacted Concrete per batch

**Technical changes can be made after the final examination of the engineering department.*

1.5 m³ PLANETARY MIXER

Compacted Concrete Per Batch: **1.5 m³**

Dry Volume: **2.25 m³**

Motor Power: **75 kW**

Filter: Present

Temperature sensor for concrete: Present

Moisture probe: Present



Mixing Blades & Wearing Plates

Mixing Blade : Ni-Hard 4 (**Chrome, Nickel special alloy cast iron**)

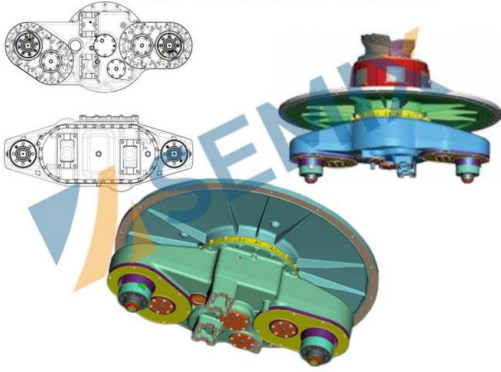
Stripping Blade : Ni-Hard 4 (**Chrome, Nickel special alloy cast iron**)

Internal Wearing : **HARDOX 450**

Ni-Hard 4 : In all SEMIX Concrete Mixers, Ni-Hard 4 alloys are being used in mixer blades. NiHard4 is a white cast iron product with nickel and chromium alloying, to give a hard chromium carbide in a martensitic matrix. This structure is ideal for products under conditions of high abrasiveness and high impaction conditions.



COBRA *Riduttori*



9PLPT08 Cobra (Italy) Gearbox

Number of rotating stars: **2**
Number of blades for each star: **3**
Star diameter: **1260 mm**
Weight of the gearbox: **1275 kg**

Mixer Chassis

The main chassis was built in compliance with international requirements with a transition height of 4,100 mm to 4,250 mm with high-quality steel components and outstanding workmanship. For maneuvering and filling the truck mixer with an average width of 5,000 mm, the main chassis offers great ease. A platform, handrails, and stairs are built into the main chassis.

Supports of the chassis: UNP & INP profiles with extra cross braces



Weighing Hoppers

Cement Weighing Capacity : 800 kg
Cement Weighing Load-cells : 3 units 500 kg
Water Weighing Capacity : 450 kg
Water Weighing Load-cells : 2 units 500 kg
Additive Weighing Capacity : 1 x 20 lt
Additive Weighing Load-cells : 1 unit 100 kg

Weighing Hopper Equipments

Cement Discharge Valve: Ø 200 mm Butterfly Type - **WAM (Italy)**
Cement Hopper Vibrator: 1 unit - **OLI (Italy)**
Filter for Cement Hopper: 1 Unit - WAM (Italy)
Water Discharge Valve: Ø 150 Butterfly Type mm - **WAM (Italy)**
Additive Discharge Valve: 1 Unit - 1 ½" ball valve with actuator





Skip Hoist

Volume: 2 m³

Motor Power: 15 kW three phase electrical motor

Aggregate Storage Silos



- Storage Capacity: 4 (bins) x 15 m³ = 60 m³
- Shape of the design: Inline storage hoppers
- Pneumatic Pistons: **8 Pistons, Festo (Germany)**
- Pneumatic Valves: **8 Valves, Festo (Germany)**
- Vibrators: 2 Vibrators located at the middle of discharging hatches with strengthened plate, **MVE 200/3 WAM-OLI (ITALY)**
- **Microwave Type Moisture Probe: 1 Unit**
- **Sheet Metal: 4 + 4 millimeters S235JR steel:**
- *Strengthened with the extra sheet weldments for back-up.*
- *Trapezoidal bending process for increasing the durability*



Aggregate Weighing Conveyor

Rubber Belt Conveyor: **EP125, 4 layered**

Vibrator: 1 unit, **WAM-OLI (Italy)**

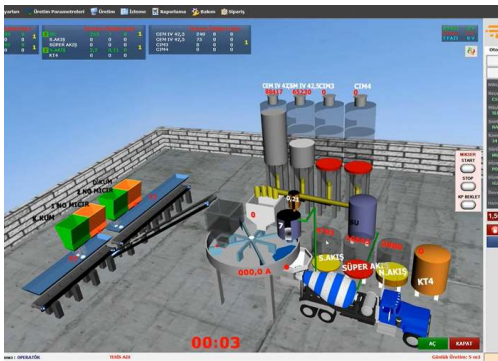
Motor Power: 11 kW three phase electric motor.

Drive drum: Bolted shaft design for easy maintenance.

Product Gallery

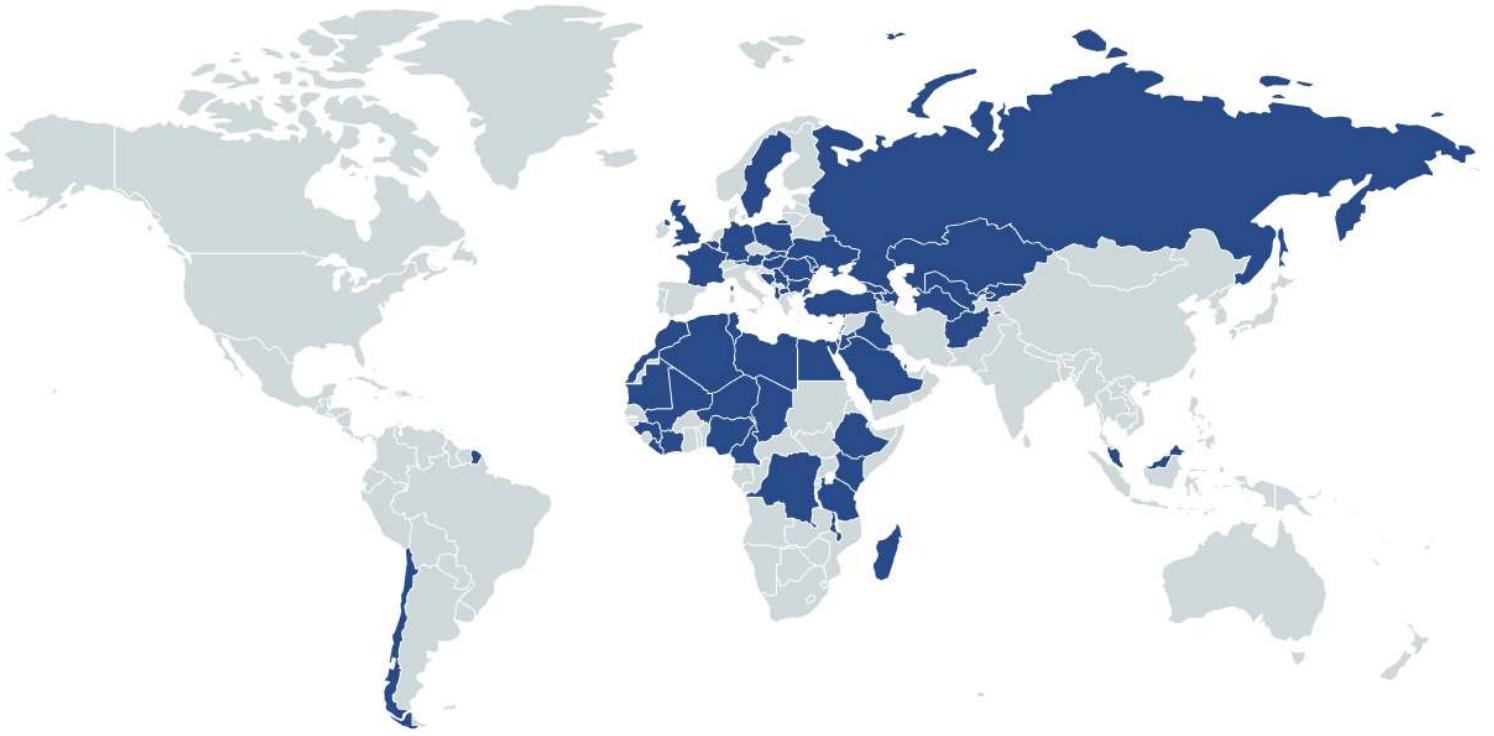


AUTOMATION SYSTEM



- Production Screen;** You can monitor process of the operation on the animation screen, which is infrastructure by Microsoft DirectX. During the producing, required values, measurement values and differences of values will be shown. Following of the measured will be checked by the system during the process and it will be shown on automation screen with error sound if there is a problem. It can add or discharge water automatically without changing value of cement, during the process.
- Entering;** You can change the value of production to add or discharge while you are producing your order. You can portray unlimited customer, target, transfer with different drivers. Definition of silo and material can be changed and checked by the operator easily on the computer.
- Settings;** The automation system uses lots of parameters, that was designed to be understandable easily for any user; to get most efficient performance. Also, the settings can be locked not to be changed by workers.
- History;** When user want, he can checked old production records or details. And if there is need, the old production records or details can be printed any time.
- Reporting;** The program saves unlimited production record in database, so you can get report (production, receipt, customer, field work, etc.) with different time periods as daily, weekly, monthly, yearly when it is needed. Reports can be printed or forward them to excel or PDF files. Also, Stock reports can be get at the same way.
- Delivery Note;** You can print delivery note after or before the manufacture. If you don't want to print at that time, you can print them from the database when it is needed. Also you can split or merge manufactures' delivery note when it is needed them. After manufacturing, if customer changes, You can change the new customer and reprint a new delivery note.
- User Permissions;** You can limit operators or any user permissions when it is needed.
- Manufacturing from Orders;** You can define daily order list to the program and ordered lists can be produced through the program. You can monitor orders produced and remaining time by time.
- Planned Manufacture;** Before manufacturing is completed, you can enter the next production to program. If you save the next production record to program, after the last production finish, the next production will start automatically.
- Internet;** The program is designed to be controlled via the internet. By via internet, you can do reporting, editing, deleting or viewing (receipts, field work, customers, production details, etc.). Also, you can create, remove or edit order records for defined user rights. Reports may print or save on PDF, Excel by using via internet. For using via internet, you should get a static ip. Infrastructure for internet (staticip, internet line, etc.) will be provided by yourself. P.S.: Internet features are optional and requires additional charge.
- Remote Support;** If you have an internet connection in cabin, we can help and solve problems quickly and you will have technical support about automation program.

References



HEIDELBERG
CEMENT

STRABAG

LAFARGE



HYUNDAI

ASTALDI

clinotech

Limak

kalyon

CENGİZ
İNŞAAT

KOLİN

KİPAŞ HOLDİNG

ONUR
TAHHÜT TAŞIMACILIK İNŞAAT TİC. VE SAN. A.Ş.

DANIŞ BETON
DİVA İNŞAAT SAN. TİC. A.Ş.

AKPINAR

çiftay