

# SEMIX CT100PLT

## STATIONARY CONCRETE BATCHING PLANTS



SMX-A-2409261033-0

### PROPOSAL

#### Prefabloc

2 Rue des Pamplemousses, Petite Île 97429, Réunion

+ 33 (0) 692 87 78 30

hello@powermat-plant.com / maximin.valromex@prefabloc.re

#### Delivery

10-14 weeks

#### Validity Of Offer

10-10-2024

#### Terms Of Payment

%50 Advance, %50 Before Shipment



## SEMIX CT 100PLT STATIONARY CONCRETE BATCHING PLANT

DESCRIPTION	AMOUNT	UNIT PRICE	TOTAL PRICE
1) SEMIX CT 100PLT STATIONARY CONCRETE BATCHING PLANT	1	€300,000.00	€300,000.00
1.1) MIXER TYPE & CAPACITY: 3000/2000 (2.0 M <sup>3</sup> ) SEMIX PLANETARY CONCRETE MIXER	1	-	-
1.2) MIXER MOTOR POWER : 1X90KW	1	-	-
1.3) AGGREGATE BIN CAPACITY : 5 X 15 = 75 M <sup>3</sup>	1	-	-
1.4) AGGREGATE WEIGHING SYSTEM: WEIGHING CONVEYOR BELT	1	-	-
1.5) AGGREGATE TRANSFER MECHANISM : TRANSFER CONVEYOR BELT	1	-	-
1.6) CEMENT WEIGHING HOPPER: 1200 KG	1	-	-
1.7) WATER WEIGHING HOPPER: 700 KG	1	-	-
1.8) ADDITIVE WEIGHING HOPPER: 2X10 LITRES	1	-	-
1.9) ADDITIVE PUMPS: 4	1	-	-
1.10) CONTROL CABINE: PRESENT	1	-	-
1.11) SOFTWARE: SEMIX (SQL BASED)	1	-	-
1.12) ELECTRICAL PANEL COMPONENTS: SCHNEIDER (INCLUDING PLC)	1	-	-
1.13) COMPRESSOR : PRESENT	1	-	-
1.14) SUPERVISING INSTALLATION INCLUDED (1 MECHANICAL TECHNIAN & AUTOMATION TECHNIAN). FLIGHT TICKETS, HOTEL ACCOMODATION & MEAL COSTS EXCLUDED	1	-	-
		Subtotal:	€300,000.00
		Discount:	-€35,000.00
		Total EXW ANKARA:	€265,000.00
<b>TRANSPORTATION</b>			
		CT 100 - (EXW Ankara)	€0.00
		General Total:	€265,000.00

## OPTION 1

DESCRIPTION	AMOUNT	UNIT PRICE	TOTAL PRICE
1) CEMENT SILO 100 TONS BOLTED TYPE	3	€22,000.00	€66,000.00
1.1) SILO ACCESSORIES SET	3	-	-
1.2) CEMENT SCREW CONVEYOR Ø 273 MM	3	-	-
		Subtotal:	€66,000.00
		Total:	€66,000.00
<b>TRANSPORTATION</b>			
		Total EXW ANKARA:	€66,000.00



## A Semi Mobile Approach to Stationary Concrete Batching Plants

**SEMIX's** engineers evaluated a design that can, in effect, function as a stationary building but, at the same time, be mobile as portable concrete batching plants. CT100 Stationary Concrete Batching plant is designed for quick installation and easy transportation. It's perfect for mid-scale projects that needs efficiency. Most of the components (such as pneumatic installations, water and additive pipings, electrical wirings) are pre-assembled at SEMIX's factory. These applications help prevent wasted time on the site, which is crucial during installation.

## Product Gallery







## Technical Details

Compacted Concrete Per Batch: **2.0 m<sup>3</sup>**

Dry Volume: **3.00 m<sup>3</sup>**

Motor Power: **90 kW**

Maximum Grain Size : **50-65 mm**

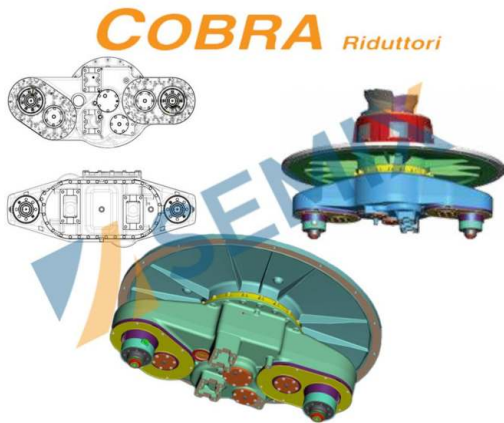
## Mixing Blades & Wearing Plates

Mixing Blade : Ni-Hard 4 (**Chrome, Nickel special alloy cast iron**)

Stripping Blade : Ni-Hard 4 (**Chrome, Nickel special alloy cast iron**)

Internal Wearing : **HARDOX 450**

Ni-Hard 4 : In all SEMIX Concrete Mixers, Ni-Hard 4 alloys are being used in mixer blades. NiHard4 is a white cast iron product with nickel and chromium alloying, to give a hard chromium carbide in a martensitic matrix. This structure is ideal for products under conditions of high abrasiveness and high impact conditions.



## 9PLPT08 Cobra (Italy) Gearbox

Number of rotating stars: **2**

Number of blades for each star: **3**

Star diameter: **1260 mm**

Weight of the gearbox: **1275 kg**

## Weighing Hoppers

Cement Weighing Capacity : 1100 kg  
Cement Weighing Load-cells : 3 units 1000 kg  
Microsilica Weighing Capacity : 250 kg  
Microsilica Weighing Load-cells : 3 units 200 kg  
Water Weighing Capacity : 700 kg  
Water Weighing Load-cells : 2 units 500 kg  
Additive Weighing Capacity : 2 x 10 lt  
Additive Weighing Load-cells : 2 units 100 kg  
Additive pumps : 4 Units



## Weighing Hopper Equipments

**Cement Discharge Valve** : Ø 300 mm Butterfly Type - **WAM (Italy)**  
**Cement Hopper Vibrator** : 1 unit - **OLI (Italy)**  
**Water Discharge Valve** : Ø 200 Butterfly Type mm - **WAM (Italy)**  
**Additive Discharge Valve** : 1 Unit - 1 ½" ball valve with actuator

## Aggregate Storage Bin

Aggregate Bins Capacity&Quantity : 75 m<sup>3</sup> – 15 m<sup>3</sup> capacity each one – 5 bins (Linear)

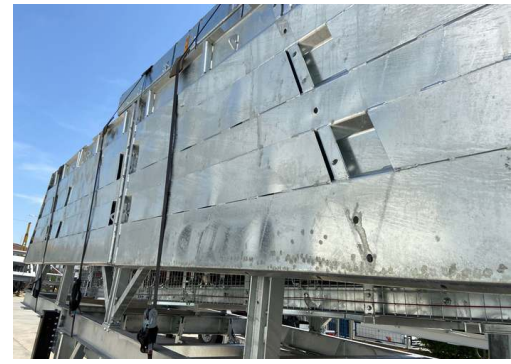
Bunker Discharging Gate(s) : 2 Gates in each bin – Totally 10 Discharging Gates

Vibrator Brand & Capacity : 350/3 – 2 Units **WAM-OLI (Italy)**

Pneumatic Piston Brand & Capacity : DSBC 80-250 Piston 10 Units – **Festo (Germany)**

Pneumatic Valve : 10 Units – **Festo (Germany)**





With trapezoidal bending for aggregate bin covers a high strength can be reached. In SEMIX's aggregate storage hoppers, extra reinforcement steels are welded to the empty spaces in the trapezoid. Thanks to this method, aggregate storage bins can serve long years.

## Weighing Conveyor

Belt Quality : EP 125 / 4 coats

Vibrator : 1 Unit - **WAM-OLI (Italy)**

Drums : 10 mm Rubber Coated

Bearings : Lubrication Grease Nipple over SNH series

Scraper : V type with its weights -1 Unit

Emergency Stop Button : 1 Unit

Pull-rope Switch : 1 Unit



## Transfer Conveyor

Belt Quality : EP 125 / 4 coats

Bearings : Lubrication Grease Nipple over SNH series

Scraper : V type with its weights -1 Unit

Emergency Stop Button : 1 Unit

Pull-rope Switch : 1 Unit

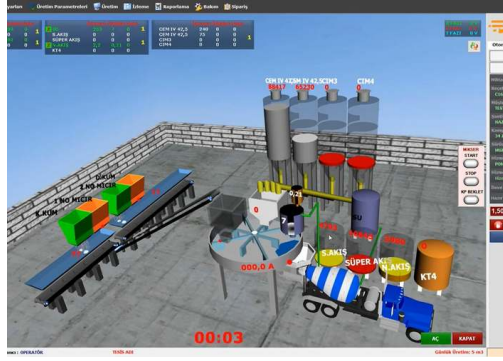
Covering over the Belt : Semi-closed with steel sheet

## Grid Blasting Before Painting



All components of the SEMIX's concrete batching plants are treated with Grit Blasting process in SEMIX's certified grit blasting facility before the painting with steel balls. This method provides high surface finish quality after the painting.

# CONTROL CABIN & AUTOMATION SYSTEM



Air conditioner, electrical connections and lightening - present at control cabin. Power board with manual control system provides production options completely at automatic - mode as well as manual mode. Power board includes safety system protection switches for motors (phase protection relay), circuite breaker in case of overload. All electrical components are SCHNEIDER brand. Full set of computer for automation system with printer/UPS - present.

### AUTOMATION SYSTEM:

**Production Screen;**You can monitor process of the operation on the animation screen, which is infrastructure by Microsoft DirectX. During the producing, required values, measurement values and differences of values will be shown. Following of the measured will be checked by the system during the process and it will be shown on automation screen with error sound if there is a problem. It can add or discharge water automatically without changing value of cement, during the process.

**Entering;**You can change the value of production to add or discharge while you are producing your order. You can portray unlimited customer, target, transfer with different drivers. Definition of silo and material can be changed and checked by the operator easily on the computer.

**Settings;** The automation system uses lots of parameters, that was designed to be understandable easily for any user; to get most efficient performance. Also, the settings can be locked not to be changed by workers.

**History;**When user want, he can checked old production records or details. And if there is need, the old production records or details can be printed any time.

**Reporting;** The program saves unlimited production record in database, so you can get report (production, receipt, customer, field work, etc.) with different time periods as daily, weekly, monthly, yearly when it is needed. Reports can be printed or forward them to excel or PDF files. Also, Stock reports can be get at the same way.

**Delivery Note;**You can print delivery note after or before the manufacture. If you don't want to print at that time, you can print them from the database when it is needed. Also you can split or merge manufactures' delivery note when it is needed them. After manufacturing, if customer changes, You can change the new customer and reprint a new delivery note.

**User Permissions;** You can limit operators or any user permissions when it is needed.

**Manufacturing from Orders;** You can define daily order list to the program and ordered lists can be produced through the program. You can monitor orders produced and remaining time by time.

**Planned Manufacture;** Before manufacturing is completed, you can enter the next production to program. If you save the next production record to program, after the last production finish, the next production will start automatically.

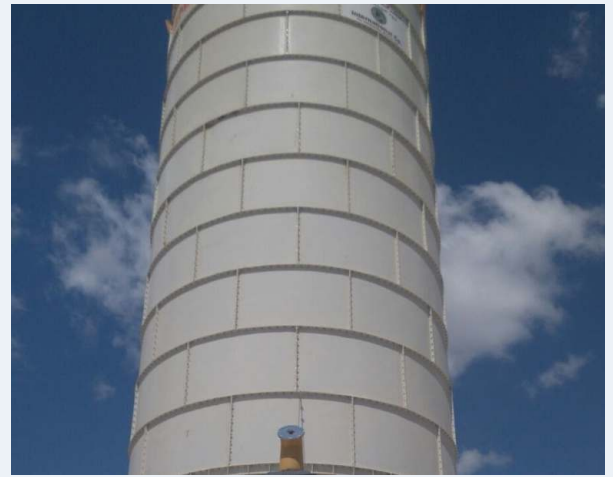
**Internet;**The program is designed to be controlled via the internet. By via internet, you can do reporting, editing, deleting or viewing (receipts, field work, customers, production details, etc. ). Also, you can create, remove or edit order records for defined user rights. Reports may print or save on PDF, Excel by using via internet. For using via internet, you should get a static ip. Infrastructure for internet ( staticip, internet line, etc. ) will be provided by yourself. P.S.: Internet features are optional and requires additional charge.

**Remote Support;**If you have an internet connection in cabin, we can help and solve problems quickly and you will have technical support about automation program.



## Bolted Silos

Bolted silos are preferred due to its' compactness for transportation. It can be transported with containers for avoiding freight costs. Because of its modularity, Semix is able to manufacture bolted silos in a range between 100 to 2000 tons. Semix provides a mechanical supervisor for assembling the bolted silo correctly. Semix has succeeded to install bolted silos (which's capacities of more than 500 tons) in Peru, Israel, Germany, Dubai, and United Kingdom.



## SCREW CONVEYORS

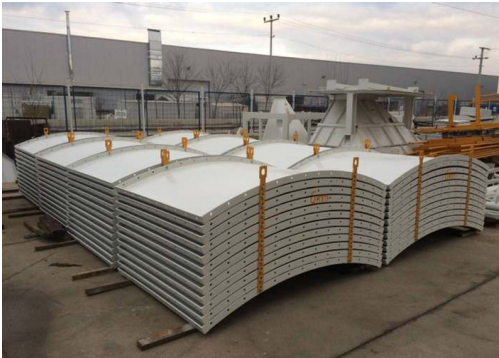
3 Units of Screw Conveyors (Ø273 mm) will be assembled for discharging the cement.

## EQUIPMENTS

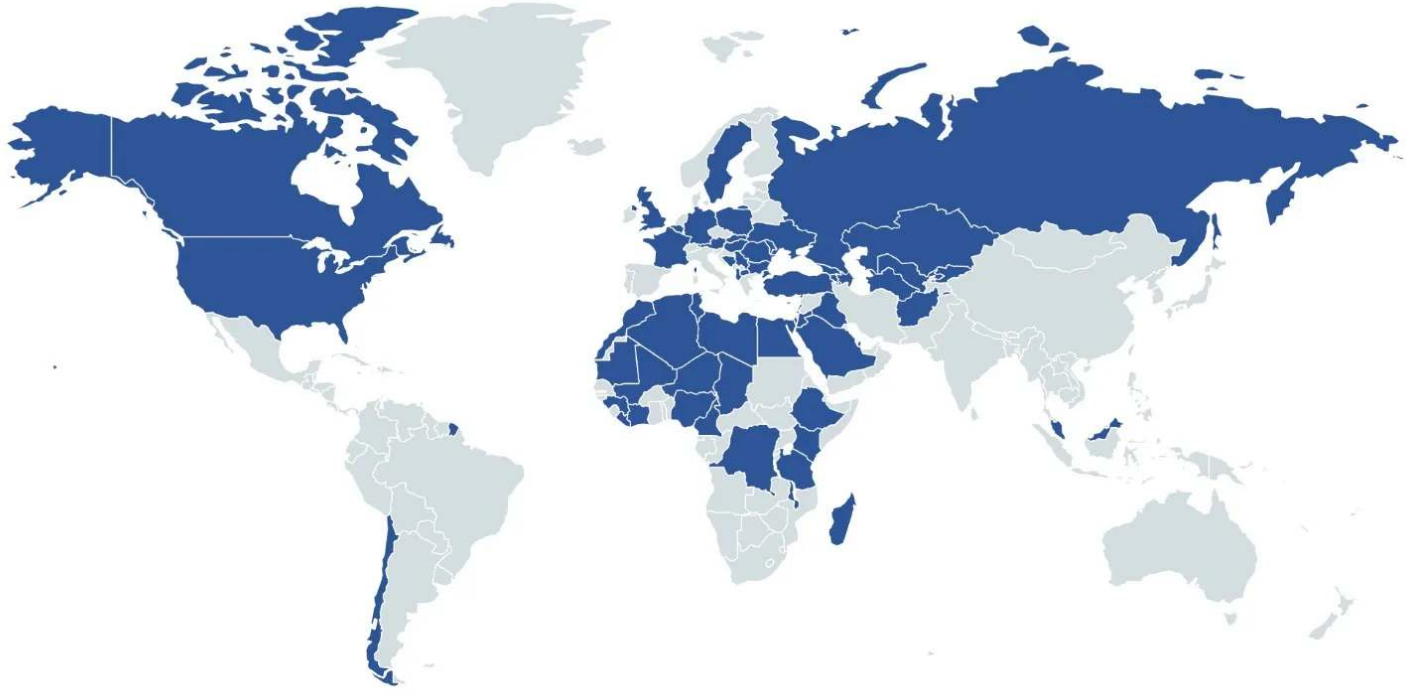
1. PRESSURE RELIEF VALVE: **WAM**
2. BUTTERFLY VALVE: **WAM**
3. PNEUMATIC ACTUATOR: **WAM**
4. MICRO SWITCH: **WAM**
5. LEVEL INDICATOR: **WAM**
6. SAFETY VALVE: **WAM**
7. AIR JETS: **WAM**
8. FLAP: **WAM**



# Product Gallery



# References



**HEIDELBERG**  
CEMENT

**STRABAG**

**LAFARGE**

**BOUYGUES**

**HYUNDAI**

**ASTALDI**

**clinotech**

**Limak**

**kalyon**

**CENGİZ**  
İNŞAAT

**KOLİN**

**KİPAŞ HOLDİNG**

**ONUR**  
TAHHİT TAHHADLIK İNŞAAT TİC. VE SAN. A.Ş.

**DANIŞ BETON**  
SİVA İNŞAAT SAN. TİC. A.Ş.

**AKPINAR**

**çiftay**