

# SEMIX CEMENT SILOS

## BOLTED CEMENT SILOS



SMX-E-2401121227-1

## PROPOSAL

**POLIDANO**

Malta

**Delivery**

8-12 weeks

**Validity Of Offer**

27-01-2024

**Terms Of Payment**

%50 Advance, %50 Before Shipment



**CEMENT SILO 500 TONS - BOLTED TYPE**

DESCRIPTION	AMOUNT	UNIT PRICE	TOTAL PRICE
1.1) CEMENT SILO 500 TONS - BOLTED TYPE	1	€118,500.00	€118,500.00
1.2) SILO EQUIPMENTS : WAM BRAND (ITALY)	1	-	-
		Subtotal:	€118,500.00
		Total:	€118,500.00
<b>TRANSPORTATION</b>			
		Cement Silos - (EXW Ankara)	€0.00
		General Total:	€118,500.00

**OPTION 1**

DESCRIPTION	AMOUNT	UNIT PRICE	TOTAL PRICE
2.1) CEMENT SCREW CONVEYOR : Ø323 X 9500 MM WAM BRAND (ITALY)	1	€5,850.00	€5,850.00
2.2) LOADING BELLOW WAM BRAND (ITALY)	1	€14,460.00	€14,460.00
		Subtotal:	€20,310.00
		Total:	€20,310.00
<b>TRANSPORTATION</b>			
		General Total:	€20,310.00



## Bolted Silos

Bolted silos are preferred due to its' compactness for transportation. It can be transported with containers for avoiding freight costs. Because of its modularity, Semix is able to manufacture bolted silos in a range between 100 to 2000 tons. Semix provides a mechanical supervisor for assembling the bolted silo correctly. Semix has succeeded to install bolted silos (which's capacities of more than 500 tons) in Peru, Israel, Germany, Dubai, and United Kingdom.

## EQUIPMENTS

1. PRESSURE RELIEF VALVE: **WAM**
2. BUTTERFLY VALVE: **WAM**
3. PNEUMATIC ACTUATOR: **WAM**
4. MICRO SWITCH: **WAM**
5. LEVEL INDICATOR: **WAM**
6. SILO TOP FILTER: **WAM**
7. SAFETY VALVE: **WAM**
8. AIR JETS: **WAM**
9. FLAP: **WAM**



## SCREW CONVEYORS (OPTIONAL)

1 Unit of **WAM** Screw Conveyors (Ø323/9500 mm) will be assembled for discharging the cement.

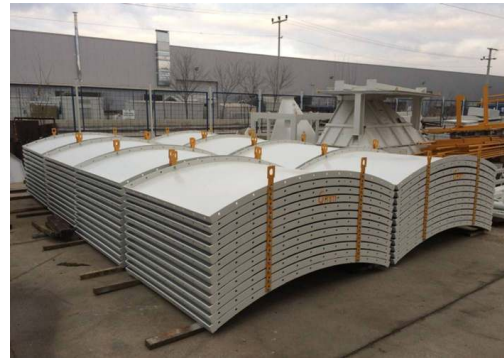
## LOADING BELLOW (OPTIONAL)

### WAMBrand Loading Bellow

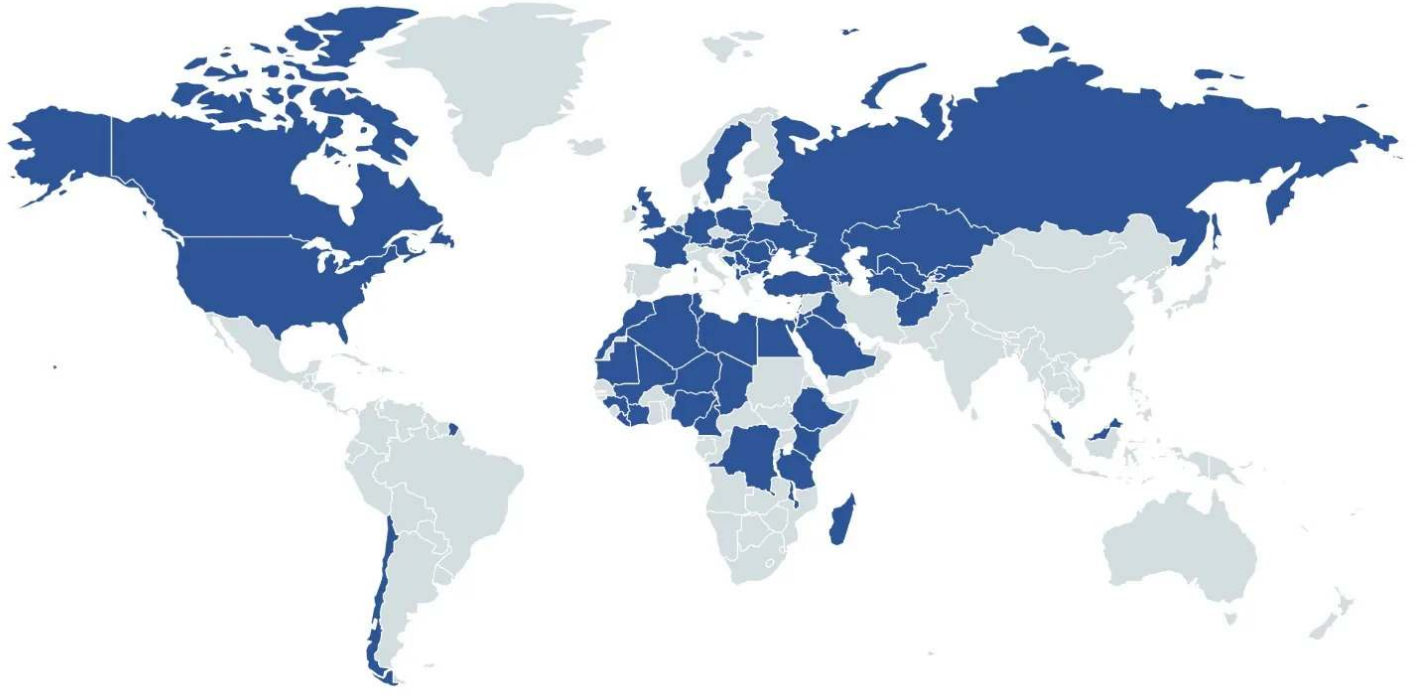
Open/Close length 3.110/1.690 mm, Stroke 1500 mm, 250 m<sup>3</sup>/h, ZA Type  
ZAMB+15N111114 with Filter



## Product Gallery



# References



**HEIDELBERG**  
CEMENT

**STRABAG**

**LAFARGE**



**HYUNDAI**

**ASTALDI**

**clinotech**

**Limak**

**kalyon**

**CENGİZ**  
İNŞAAT

**KOLIN**

**KİPAŞ HOLDİNG**

**ONUR**  
TAHHİT TAHHADLIK İNŞAAT TİC. VE SAN. A.Ş.

**DANIŞ BETON**  
SİVİL İNŞAAT SAN. TİC. A.Ş.

**AKPINAR**

**çiftay**