

# SEMIX 1.5PLT

## CONCRETE BATCHING PLANTS



SMX-V-2403041426-0

### PROPOSAL

#### NORDIMPIANTI

Mr. Gianpiero Galiardi  
Pescara

ITALY

Delivery  
12 Weeks

Validity Of Offer  
19-03-2024

Terms Of Payment  
%50 Advance, %50 Before Shipment



## SEMIX 1.5PLT CONCRETE BATCHING PLANT

DESCRIPTION	AMOUNT	UNIT PRICE	TOTAL PRICE
1) SEMIX 1.5PLT CONCRETE BATCHING PLANT	1	€194,710.00	€194,710.00
1.1) MIXER TYPE & CAPACITY: 1.5 M <sup>3</sup> PLANETARY MIXER	1	-	-
1.2) MIXER MOTOR POWER : 75 KW	1	-	-
1.3) AGGREGATE TRANSFER MECHANISM : CONVEYOR BELT	1	-	-
1.4) COMPRESSOR : 1100 LT	1	-	-
1.5) CEMENT WEIGHING HOPPER: 900 KG	1	-	-
1.6) WATER WEIGHING HOPPER : 500 KG	1	-	-
1.7) AGGREGATE BIN CAPACITY : 4 X 20 = 80 M <sup>3</sup>	1	-	-
1.8) AGGREGATE WEIGHING SYSTEM: WEIGHING CONVEYOR BELT	1	-	-
1.9) ELECTRICAL PANEL COMPONENTS: SCHNEIDER (INCLUDING PLC)	1	-	-
1.10) SOFTWARE: SEMIX (SQL BASED)	1	-	-
		Subtotal:	€194,710.00
		Total:	€194,710.00
TRANSPORTATION			
		SEMIX 1.5PLT - (EXW Ankara)	€0.00
		General Total:	€194,710.00

## OPTION 1

DESCRIPTION	AMOUNT	UNIT PRICE	TOTAL PRICE
1.1) MIXER STEEL FRAME	1	€24,670.00	€24,670.00
1.2) ADDITIVE WEIGHING HOPPER: 20 LITRES	1	€2,800.00	€2,800.00
1.3) SILO ACCESSORIES SET	1	€7,000.00	€7,000.00
		Subtotal:	€34,470.00
		Total:	€34,470.00
TRANSPORTATION			
		General Total:	€34,470.00



## A Semi Mobile Approach to Stationary Concrete Batching Plants

**SEMIX's** engineers evaluated a design that can, in effect, function as a stationary building but, at the same time, be mobile as portable concrete batching plants. 1.5PLT Compact Concrete Batching plant is designed for quick installation and easy transportation. It's perfect for mid-scale projects that needs efficiency. Most of the components (such as pneumatic installations, water and additive pipings, electrical wirings) are pre-assembled at SEMIX's factory. These applications help prevent wasted time on the site, which is crucial during installation.

### 1.50 m<sup>3</sup> Planetary Concrete Mixer

Compacted Concrete Per Batch: **1.5 m<sup>3</sup>**  
 Dry Volume: **2.25 m<sup>3</sup>**  
 Motor Power: **75 kW**



### Mixing Blades & Wearing Plates

Mixing Blade : Ni-Hard 4 (**Chrome, Nickel special alloy cast iron**)  
 Stripping Blade : Ni-Hard 4 (**Chrome, Nickel special alloy cast iron**)  
 Internal Wearing : **HARDOX 450**

Ni-Hard 4 : In all SEMIX Concrete Mixers, Ni-Hard 4 alloys are being used in mixer blades. NiHard4 is a white cast iron product with nickel and chromium alloying, to give a hard chromium carbide in a martensitic matrix. This structure is ideal for products under conditions of high abrasiveness and high impaction conditions.

Discharge Door : 1 Unit / **Hydraulic , 3 stage discharging**

Discharging in Emergency Situations : Present - Manual Pump

Water Dispenser : Present - 1 Unit

Emergency Stop Button : Present - 1 Unit

Maintenance Door Safety Switch : Present - 1 Unit





## Weighing Hoppers

Cement Weighing Capacity : 900 kg  
 Cement Weighing Load-cells : 3 units 500 kg  
 Water Weighing Capacity : 500 kg  
 Water Weighing Load-cells : 2 units 500 kg  
 Additive Weighing Capacity : 1 x 20 lt (optional)  
 Additive Weighing Load-cells : 1 unit 100 kg

Cement Discharge Valve : Butterfly Type - **WAM (Italy)**  
 Cement Hopper Vibrator : 1 unit - **OLI (Italy)**  
 Water Discharge Valve : Butterfly Type mm - **WAM (Italy)**  
 Additive Discharge Valve : 1 Unit - 1 ½" ball valve with actuator



## Aggregate Storage Bins

Aggregate Bins Capacity&Quantity : 80 m<sup>3</sup> (20 m<sup>3</sup> capacity each one – 4 bins (Linear)  
 Bunker Discharging Gate(s) : 2 Gates in each bin – Totally 8 Discharging Gates  
 Vibrator Brand & Capacity : 2 Units **WAM-OLI (Italy)**  
 Pneumatic Piston Brand & Capacity : 8 Units – **Festo (Germany)**  
 Pneumatic Valve : 8 Units – **Festo (Germany)**

By bending the cover into a trapezoid-like shape, a high level of strength can be achieved. In SEMIX's aggregate storage hoppers, high-strength reinforcement steels are welded together to create an incredibly sturdy construction. By following this method, you can keep your aggregate storage bins working like new for many years.



### Weighing Conveyor

- Belt Quality : EP 125 / 4 coats
- Vibrator : 1 Unit - **WAM-OLI (Italy)**
- Drums : 10 mm Rubber Coated
- Bearings : Lubrication Grease Nipple over SNH series
- Scraper : V type with its weights -1 Unit
- Emergency Stop Button : 1 Unit
- Pull-rope Switch : 1 Unit

### Transfer Conveyor

- Belt Quality : EP 125 / 4 coats
- Bearings : Lubrication Grease Nipple over SNH series
- Scraper : V type with its weights -1 Unit
- Emergency Stop Button : 1 Unit
- Pull-rope Switch : 1 Unit
- Covering over the Belt : Semi-closed with steel sheet

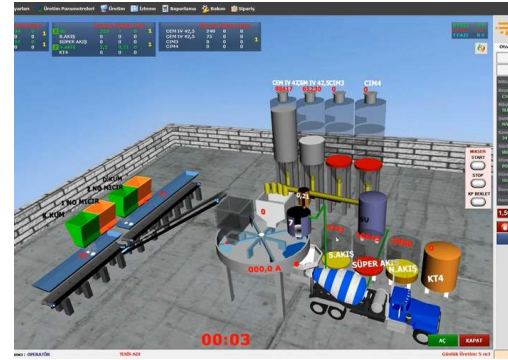


### Grid Blasting Before Painting



All components of the SEMIX's concrete batching plants are treated with Grit Blasting process in SEMIX's certified grit blasting facility before the painting with steel balls. This method provides high surface finish quality after the painting.

# AUTOMATION SYSTEM



## AUTOMATION SYSTEM:

**Production Screen;** You can monitor process of the operation on the animation screen, which is infrastructure by Microsoft DirectX. During the producing, required values, measurement values and differences of values will be shown. Following of the measured will be checked by the system during the process and it will be shown on automation screen with error sound if there is a problem. It can add or discharge water automatically without changing value of cement, during the process.

**Entering;** You can change the value of production to add or discharge while you are producing your order. You can portray unlimited customer, target, transfer with different drivers. Definition of silo and material can be changed and checked by the operator easily on the computer.

**Settings;** The automation system uses lots of parameters, that was designed to be understandable easily for any user; to get most efficient performance. Also, the settings can be locked not to be changed by workers.

**History;** When user want, he can checked old production records or details. And if there is need, the old production records or details can be printed any time.

**Reporting;** The program saves unlimited production record in database, so you can get report (production, receipt, customer, field work, etc.) with different time periods as daily, weekly, monthly, yearly when it is needed. Reports can be printed or forward them to excel or PDF files. Also, Stock reports can be get at the same way.

**Delivery Note;** You can print delivery note after or before the manufacture. If you don't want to print at that time, you can print them from the database when it is needed. Also you can split or merge manufactures' delivery note when it is needed them. After manufacturing, if customer changes, You can change the new customer and reprint a new delivery note.

**User Permissions;** You can limit operators or any user permissions when it is needed.

**Manufacturing from Orders;** You can define daily order list to the program and ordered lists can be produced through the program. You can monitor orders produced and remaining time by time.

**Planned Manufacture;** Before manufacturing is completed, you can enter the next production to program. If you save the next production record to program, after the last production finish, the next production will start automatically.

**Internet;** The program is designed to be controlled via the internet. By via internet, you can do reporting, editing, deleting or viewing (receipts, field work, customers, production details, etc. ). Also, you can create, remove or edit order records for defined user rights. Reports may print or save on PDF, Excel by using via internet. For using via internet, you should get a static ip. Infrastructure for internet ( staticip, internet line, etc. ) will be provided by yourself. P.S.: Internet features are optional and requires additional charge.

**Remote Support;** If you have an internet connection in cabin, we can help and solve problems quickly and you will have technical support about automation program.



## SILO ACCESSORIES SET - OPTIONAL

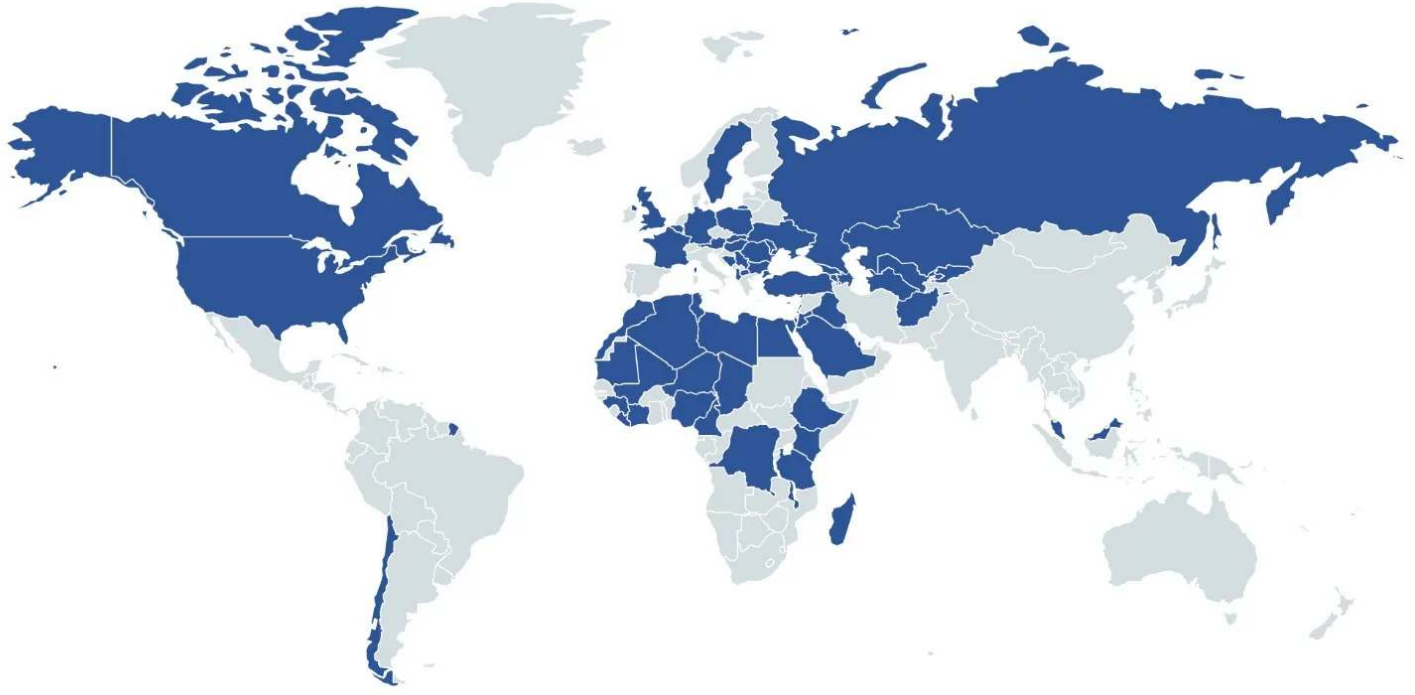
1. PRESSURE RELIEF VALVE: **WAM**
2. BUTTERFLY VALVE: **WAM**
3. PNEUMATIC ACTUATOR: **WAM**
4. MICRO SWITCH: **WAM**
5. LEVEL INDICATOR: **WAM**
6. SILO TOP FILTER: **WAM**
7. SAFETY VALVE: **WAM**
8. AIR JETS: **WAM**
9. FLAP: **WAM**



## SCREW CONVEYORS - OPTIONAL

1 Unit of **WAM** Screw Conveyors ( $\varnothing 273/8000$  mm) will be assembled for discharging the cement.

# References



HEIDELBERG  
CEMENT

STRABAG

LAFARGE



HYUNDAI

ASTALDI

clinotech

Limak

kalyon

CENGİZ  
İNŞAAT

KOLIN

KİPAŞ HOLDİNG

ONUR  
TAHHİT TAHHADLIK İNŞAAT TİC. VE SAN. A.Ş.

DANIŞ BETON  
SİVA İNŞAAT SAN. TİC. A.Ş.

AKPINAR

çiftay