

SEMIX ST 130 (SKIP HOIST)

STATIONARY CONCRETE BATCHING PLANT



SMX-C-2308021000-13

PROPOSAL

PIONEER READY MIX

Mr. Salah
PO Box 8262

Abu Dhabi UAE

Delivery
12 weeks

Validity Of Offer
17-08-2023

Terms Of Payment
%50 Advance, %50 Before Shipment



SEMIX ST 130 STATIONARY CONCRETE BATCHING PLANT (SKIP HOIST)

DESCRIPTION	AMOUNT	UNIT PRICE	TOTAL PRICE
1) SEMIX ST 130 STATIONARY CONCRETE BATCHING PLANT (SKIP HOIST)	1	€365,000.00	€365,000.00
1.1) MIXER TYPE & CAPACITY: 3.33 M ³ TWIN SHAFT MIXER	1	-	-
1.2) MIXER MOTOR POWER : 55 KW 2 UNITS	1	-	-
1.3) AGGREGATE BIN CAPACITY : 6 X 35 = 210 M ³ INLINE	1	-	-
1.4) AGGREGATE WEIGHING SYSTEM : CONVEYOR BELT	1	-	-
1.5) AGGREGATE TRANSFER MECHANISM: SKIP HOIST SYSTEM	1	-	-
1.6) CEMENT WEIGHING HOPPER: 2000 KG	1	-	-
1.7) MICROSILICA WEIGHING HOPPER: 300 KG	1	-	-
1.8) WATER WEIGHING HOPPER: 1100 KG	1	-	-
1.9) ADDITIVE WEIGHING HOPPER: 25 LITRES	1	-	-
1.10) ADDITIVE PUMPS: 6	1	-	-
1.11) ICE WEIGHING HOPPER: 1 UNIT	1	-	-
1.12) COMPRESSOR: PRESENT	1	-	-
1.13) AUTOMATION SYSTEM : SEMIX CONTROL SOFTWARE WITH SCHNEIDER ELECTRICAL PANEL (PC & PLC)	1	-	-
1.14) CONTROL CABINE: PRESENT	1	-	-
1.15) PREFEEDING CONVEYOR SYSTEM FOR AGGREGATE BINS (WITH CONTROL PANEL)	1	€65,000.00	€65,000.00
1.16) SHUTTLE CONVEYOR ON THE TOP OF AGGREGATE BINS (WITH CONTROL PANEL)	1	€27,000.00	€27,000.00
		Subtotal:	€457,000.00
		Discount:	-€40,000.00
		Total:	€417,000.00
TRANSPORTATION			
		SEMIX ST130 - (EXW Ankara)	€0.00
		General Total:	€417,000.00

OPTION 1

DESCRIPTION	AMOUNT	UNIT PRICE	TOTAL PRICE
1) CEMENT SILO 150 TONS BOLTED TYPE	6	€36,600.00	€219,600.00
1.1) SCREW CONVEYOR FOR CEMENT Ø273 MM X 12 M	6		
1.2) CEMENT SILO EQUIPMENTS SET & FILTER	6		
2) MICROSILICA SILO 30 TONS	1	€13,000.00	€13,000.00
2.1) SCREW CONVEYOR FOR MICROSILICA	1		
2.2) MICROSILICA SILO EQUIPMENTS SET & FILTER	1		
3) MICROWAVE TYPE MOISTURE PROBE	1	€5,500.00	€5,500.00
4) FILTER FOR MIXER	1	€1,700.00	€1,700.00
		Subtotal:	€239,800.00
		Total:	€239,800.00



Customized Options

SEMIX is able to design special projects for your requirements with a strong engineering team.

Powerful Structure

SEMIX ST130 Stationary Concrete Batching Plants offers a robust steel form for high durability. **ST130** is able to serve in long lasting massive projects without any failure.



High Volumes of Concrete Production

SEMIX ST130 Stationary Concrete Batching Plants are designed for high volumes of concrete production capacities. For concrete mixer wearings **SEMIX** grants you the most durable material which has been formed from a special alloy.

Product Gallery



3.33 m³ SEMIX Twin Shaft Concrete Mixer

Compacted Concrete Per Batch: **3.33 m³**

Dry Volume: **5.0 m³**

Motor Power: **2 x 55 kW**



Mixing Blade : Ni-Hard 4 (**Chrome, Nickel special alloy cast iron**)

Stripping Blade : Ni-Hard 4 (**Chrome, Nickel special alloy cast iron**)

Internal Wearing : Ni-Hard 4 (**Chrome, Nickel special alloy cast iron**)

Ni-Hard 4 : In all SEMIX Concrete Mixers, Ni-Hard 4 alloys are being used in mixer blades. NiHard4 is a white cast iron product with nickel and chromium alloying, to give a hard chromium carbide in a martensitic matrix. This structure is ideal for products under conditions of high abrasiveness and high impactation conditions.

Discharge Door : 1 Unit / **Hydraulic , 3 stage discharging**

Discharging in Emergency Situations : Present - Manual Pump

Water Dispenser : Present - 1 Unit

Emergency Stop Button : Present - 1 Unit

Maintenance Door Safety Switch : Present - 1 Unit





Lubrication : **8** Points Automatic Lubrication System **SKF - LINCOLN (German)**

Automatic lubrication system is integrated with the PLC and SCADA, the system periodically lubricates the necessary points and preventing from major problems.

Weighing Hoppers

Cement Weighing Capacity : 2000 kg

Cement Weighing Load-cells : 3 units x 1000 kg

Microsilica Weighing Capacity : 300 kg

Microsilica Weighing Load-cells : 3 units x 200 kg

Water Weighing Capacity : 1100 kg

Water Weighing Load-cells : 2 units x 1000 kg

Additive Weighing Capacity : 1 x 25 lt

Additive Weighing Load-cells : 1 unit x 100 kg

Additive Pumps : 6 Units



Weighing Hopper Equipments

Cement Discharge Valve: Ø 350 mm Butterfly Type - **WAM (Italy)**

Cement Hopper Vibrator: 1 unit - **OLI (Italy)**

Microsilica Discharge Valve: Ø 150 mm Butterfly Type - **WAM (Italy)**

Microsilica Hopper Vibrator: 1 unit - **OLI (Italy)**

Water Discharge Valve: Ø 300 Butterfly Type mm - **WAM (Italy)**

Additive Discharge Valve: 1 Unit - 1 ½" ball valve with actuator

Aggregate Storage Bins

Aggregate Bins Capacity&Quantity : 210 m³ – 35 m³ capacity each one – 6 bins (Linear)

Bunker Discharging Gate(s) : 2 Gates in each bin – Totally 12 Discharging Gates

Vibrator Brand & Capacity : 2 Units **WAM-OLI (Italy)**

Pneumatic Piston Brand & Capacity : DSBC 80-250 Piston 12 Units – **Festo (Germany)**

Pneumatic Valve : 12 Units – **Festo (Germany)**



With trapezoidal bending for aggregate bin covers a high strength can be reached. In SEMIX's aggregate storage hoppers, extra reinforcement steels are welded to the empty spaces in the trapezoid. Thanks to this method, aggregate storage bins can serve long years.

Weighing Conveyor

Belt Quality : EP 125 / 4 coats

Load-cell : Capacity of 5000kg - 4 Units

Motor Power/Gearbox : 22 kW

Vibrator : 350/3 – 1 Unit - **WAM-OLI (Italy)**

Drums : 10 mm Rubber Coated

Bearings : Lubrication Grease Nipple over SNH series

Scraper : V type with its weights -1 Unit

Emergency Stop Button : 1 Unit

Pull-rope Switch : 1 Unit





Skip Hoist

Carrying Capacity: 7.2 tons

Motor Power: 30 kW

Frequency inverter: 1 Unit Schneider brand (France)

Encoder system for level indicating of skip position

Parachute Safety Brake system for prevention of falling of skip

Grid Blasting Before Painting



All components of the SEMIX's concrete batching plants are treated with Grit Blasting process in SEMIX's certified grit blasting facility before the painting with steel balls. This method provides high surface finish quality after the painting.



HYDRONIX BRAND MOISTURE PROBE FOR AGGREGATE BINS WITH INTEGRATION TO AUTOMATION SYSTEM (MICROWAVE TYPE)

MIXER UPPER FILTER

Filter: 6 m³ WAM Brand (*Italy*)

ICE WEIGHING SYSTEM

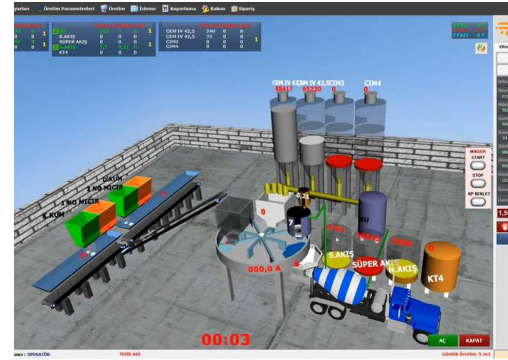
Dosing system fully integrated to automation system.

Galvanized Weighing hopper : 1 m³

Weighing loadcells : 3 units x 1000 kg

Pneumatic piston for discharging cover : 1 units

AUTOMATION SYSTEM



Production Screen; You can monitor process of the operation on the animation screen, which is infrastructure by Microsoft DirectX. During the producing, required values, measurement values and differences of values will be shown. Following of the measured will be checked by the system during the process and it will be shown on automation screen with error sound if there is a problem.

Entering; You can change the value of production to add or discharge while you are producing your order. You can portray unlimited customer, target, transfer with different drivers. Definition of silo and material can be changed and checked by the operator easily on the computer.

Settings; The automation system uses lots of parameters, that was designed to be understandable easily for any user; to get most efficient performance. Also, the settings can be locked not to be changed by workers.

History; When user want, he can checked old production records or details. And if there is need, the old production records or details can be printed any time.

Reporting; The program saves unlimited production record in database, so you can get report (production, receipt, customer, field work, etc.) with different time periods as daily, weekly, monthly, yearly when it is needed. Reports can be printed or forward them to excel or PDF files. Also, Stock reports can be get at the same way.

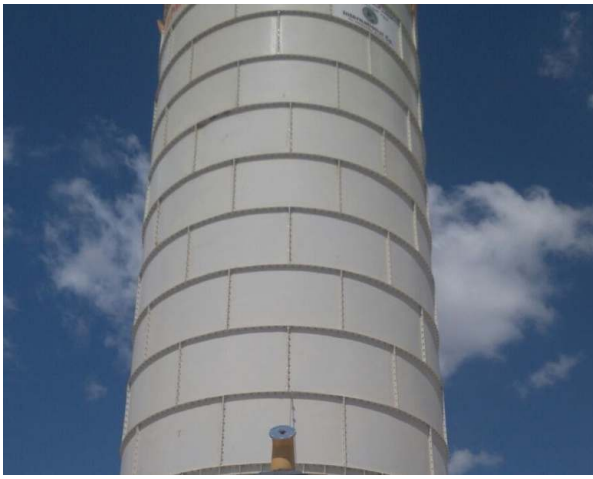
Delivery Note; You can print delivery note after or before the manufacture. Also you can split or merge manufactures' delivery note when it is needed them. After manufacturing, if customer changes, You can change the new customer and reprint a new delivery note.

Manufacturing from Orders; You can define daily order list to the program and ordered lists can be produced through the program. You can monitor orders produced and remaining time by time.

Planned Manufacture; Before manufacturing is completed, you can enter the next production to program. If you save the next production record to program, after the last production finish, the next production will start automatically.

Internet; The program is designed to be controlled via the internet. By via internet, you can do reporting, editing, deleting or viewing (receipts, field work, customers, production details, etc.). Also, you can create, remove or edit order records for defined user rights. Reports may print or save on PDF, Excel by using via internet.

Remote Support; If you have an internet connection in cabin, we can help and solve problems quickly and you will have technical support about automation program.



Bolted Cement Silos 150 Tons - 6 Units, Microsilica Silo 30 Tons - 1 Unit

Bolted silos are preferred due to its' compactness for transportation. It can be transported with containers for avoiding freight costs. Because of its modularity, Semix is able to manufacture bolted silos in a range between 100 to 2000 tons. Semix provides a mechanical supervisor for assembling the bolted silo correctly. Semix has succeeded to install bolted silos (which's capacities of more than 500 tons) in Peru, Israel, Germany, Dubai, and United Kingdom.

SCREW CONVEYORS FOR CEMENT AND MICROSILICA

6 Units of **WAM** Screw Conveyors (Ø273 mm x 12 m) will be assembled for discharging the cement. 1 Unit of WAM Screw Conveyor will be assembled for discharging the microsilica.



EQUIPMENTS FOR CEMENT & MICROSILICA SILOS

1. PRESSURE RELIEF VALVE: **WAM**
2. BUTTERFLY VALVE: **WAM**
3. PNEUMATIC ACTUATOR: **WAM**
4. MICRO SWITCH: **WAM**
5. LEVEL INDICATOR: **WAM**
6. SILO TOP FILTER: **WAM**
7. SAFETY VALVE: **WAM**
8. AIR JETS: **WAM**
9. FLAP: **WAM**

Product Gallery

